



FEBRUARY FREEZE

SATURDAY, FEBRUARY 18, 2023 | 6:30 PM CST



Accumulating appraisal and recognition from around the world in its short three-year run, the 2023 and fourth edition of February Freeze further builds upon a sale that is a household name for being loaded with unlimited potential and opportunities. This is a carefully crafted offering, with many hours being spent selecting an ensemble that we are proud to endorse. The genetic material that is included in this catalogue are being made available as the catalyst to propel your program to the forefront of the purebred sector, and ultimately (and most importantly) elevate your bottom line. The Angus division includes a genetic masterpiece in the Lot 1 female, a pick from long established leaders in the breed, the first South America heifer to ever sell North of the 49th, and an April show heifer backed by an absolutely outstanding cow. This is only a small selection of what you will find for live cattle, turn these pages and see just how deep the rest of the contribution goes.



The Simmental section receives the "most improved" accolades. And what an offering it is. The talk of the Fall was the momentous R Plus Dispersal, and we could not be prouder to offer the Canadian semen rights on the high selling, and aptly named Estevan 2162K. Alongside semen and embryos that define rare and hard to find, there is something for every program's sights.

Valuable and highly sought-after semen and embryos can be found in the Charolais lots, with many notable sires coming from South of the border. As always, our famed Hereford line up includes the who's who of breeders, with genetics that have never been offered by public auction. Thoroughly study these sections if you are looking to enhance your breeding operation.

The Fall of 2022 was one that we at T Bar C will never be forgetting. To see the value of truly quality seedstock never be so evident has never been so rewarding. The genetic decisions that were made to create these value-added cattle can be made again through this very sale. The birth of February Freeze came from our desire to give progressive breeders a marketplace for proven yet fresh genetics to add to their program, and continue advancing their own herd and production sales. We feel that this goal has been met, and when you study this lineup of 102 lots, we know you will come to the same conclusion.

Please note that as in the previous editions this is an "online only" live auction, with the chant of Chris Poley coming through your speakers, selling this sale in catalogue order. Please do not hesitate to contact any of us at T Bar regarding this sale, or any of our upcoming Spring sales. We exist to serve the purebred cattle world and take your business very seriously. We eagerly await what this 2023 year will offer the industry!

For all of us at T Bar,

BEN WRIGHT







**SALE BEGINS AT 6:30 PM CST,
5:30 PM MST, AND 7:30 PM EST**

SALE STAFF

Auctioneer

Chris Poley 306-220-5006

T Bar C Cattle Co.

Ben Wright 519-374-3335

Shane Michelson 403-363-9973

Chad Wilson 306-577-1256

Levi Rimke 204-851-4515

DLMS

Mark Shologan 780-699-5082

SALE WILL BE CONDUCTED LIVE ONLINE ONLY ON DLMS.CA

How to participate in this DLMS Online Only Live Sale

1. Visit www.dlms.ca, click the REGISTRATION link and fill out the registration form. From this page you will sign-up for a free user account and it allows you to select a username and password for use on www.dlms.ca Already have an account, simply sign in with your username and password.

2. To be Approved for bidding on the sale - Log in to www.dlms.ca with your username and password and click BUYER APPROVAL link located on the left hand side of the page, then click the SIGN UP button beside the sale you are interested in bidding on. We recommend that you request to bid for the sale at least 24 hours prior to the sale, we will do our best to approve you after this point but the earlier the better to confirm approval of bidding.

3. Approx. 24 Hours ahead of the sale we will post and update sheet with sale order and any up to date catalogue information & changes to the sale offering. Go to the sale page and view the up-to-date sale lot info, pictures and videos on each lot selling.

4. On Sale Day go to www.dlms.ca and with your username and password log in to the DLMS website. After the sale broadcast has started click the VIEW SALE button on the home page for the sale you are interested in bidding on. (DLMS starts purebred sale broadcasts approximately 30 min prior to sale time and the VIEW SALE button will appear at this point when the sale broadcast is started.)

5. During the sale when the lot comes up you are interested in bidding on simply click the Bid button. When your bid has been accepted your bid button will turn RED. If the price increases and you are out bid your bid button will turn back to BLUE to stay as the high bidder you must bid again. PLEASE remember that your bid button must be RED to be the high bidder and win the lot.

If you require assistance with getting approved for the sale, Interested in Proxy Max Bidding or bidding via phone talk to any of the DLMS Purebred team, Sale manager or Sale consignors and we can help you in purchasing the lot you are interested in.

**DLMS - Mark Shologan - 780-699-5082 or DLMS
Purebred Team - 780-991-3025**



Listed below are phone numbers for the various establishments that the embryos and semen in this sale are stored at. It is the buyers responsibility to be in touch with the seller in order to arrange shipping. Please refer to each Lot for its storage information.

Alta Genetics 403-226-0666
Bay of Quinte Veterinary Services 613-966-5229
DMV GenetiQ Services 819-314-8311
Boviteq 450-774-7949
Bow Valley Genetics (Bassano) 587-887-1934
Bow Valley Genetics (Regina) 306-585-1234.
Davis-Rairdan Embryo Transplants 403-946-4551
Eastgen 519-821-2150
Embrun Veterinary Hospital 613-443-5459
Embryo Genetics Ltd 204-822-3054
Hawkeye Breeders Services Inc 515-993-4711
Heartland Veterinary Services 519-291-2060
Kirkton Veterinary Clinic 519-229-8911
Millennium Genetics 403-329-0777
Oxford Bovine Veterinary Services 519-423-6706
Peak Veterinary Health 306-692-4800
Southwest Genetics 306-741-8398
Trans Ova Genetics 712-722-3586



INFORMATION



**SELLING 50% INTEREST - POSSESSION
NEGOTIABLE WITH PLANS OF A
FUTURE SHOW CAREER**

**CONSIGNED BY SHOLOGAN CATTLE, 719
CATTLE, AND THE LADY MAY GROUP**

BANDURA MISS 4382 LADY MAY 54J 2217731 // BAN 54J // 04/02/2021

BALDRIDGE COLONEL C251 | K R GAVEL 1057
MOHNEN GENERAL 548 | **KR LADY MAY 4382**
S A V MADAME PRIDE 5290 | WK LADY MAY 2347
CE: 4.5 // BW: 2.2 // WW: 73 // YW: 126 // MILK: 32

- Impeccable daughter of 4382 who now has over 40 direct progeny in the CAA herd book
- This flawless eye appealing General daughter ties all together with phenotype & numbers (top 2% WW & Milk, top 3% YW, top 8% Carcass amongst others)
- Superior udder quality combined with massive overall body shape make 54J the ultimate donor prospect.
- Calved Jan 3/23 with a heifer calf by Basin Safe Deposit 9324
- Lady May 54J is now open ready for embryo transplant, we have huge plans for this female in 2023 & beyond



GENERAL

BAR-E-L NATURAL LAW 52Y X KR LADY MAY 4382



- the perfect blend of maternal genetics at its best
- the remarkable Lady May is leaving her mark on the industry and this mating could be the next big thing to come with Natural Law semen rare and hard to come by



**LEAVING A MARK
INDUSTRY WIDE**



MATERNAL SISTER



NATURAL LAW



LOT 1A

**ONE PACKAGE OF
TWO EMBRYOS**

**GUARANTEE ONE PREGNANCY
IF IMPLANTED BY A CERTIFIED
TECHNICIAN.**

EMBRYOS ARE STORED AT ALTA GENETICS.

**CONSIGNED BY JIMMY JOE HENDERSON
JIMMY: 403-740-9270**



PEAK DOT LADY 831H



LOT 2

**PICK TO BE MADE BY OCTOBER 15, 2023.
HALF DOWN SALE DAY, REMAINDER
WHEN SELECTION IS MADE.**

**CONSIGNED BY PEAK DOT RANCH LTD.
CARSON: 306-266-4414
CLAY: 306-266-4411**

PICK OF THE 2022 BIG RIVER DAUGHTERS AS A BRED HEIFER

An opportunity to pick any natural born Big River female from the 2022 calf crop here at Peak Dot. Brothers to this exact pick will be the lead off sire group at our April 5th bull sale. Just read through the footnote on Big River on the next page and you'll soon realize why we are so high on this bull. Pictured below here is a small display of our dams that have Big River progeny on the ground, as he was mated to our very best cows. Keep in mind as this is a bred heifer pick you'll be able to access any of the Peak Dot Ranch exclusive herdbulls such as Gable, and Tanker to name a few.



PEAK DOT PRIDE 13F



PEAK DOT QUEEN 177D



ELLINGSON BIG RIVER 0052

ELLINGSON THREE RIVERS 8062 X EA BLACKCAP 4053

CE: -1.0 // BW: 3.7 // WW: 86 // YW: 146 // MILK: 24

We are absolutely thrilled with the first calf crop from Ellingson Big River. His first calves have solidified his phenotypic and genotypic potency. Big River progeny are well made with lots of size, body shape, hair and bone and as much sheer thickness as any sire we have ever used. His daughter are among the very best in the replacement pen and his sons will lead off the 2023 Spring Peak Dot Ranch Bull Sale on April 5. Ellingson Big River is the next big important piece in our breeding program here at Peak Dot as we continue to improve overall maternal, foot and udder quality, fertility and milking ability. His muscle density, base width and bone circumference and performance is unmatched. He checks all the boxes starting with Big Performance: A moderate 86lbs birth weight combined with a 1006lbs weaning weight and a 1674lbs yearling weight. Big Maternal: His dam EA Blackcap 4053 is one of the best donor females on the Ellingson Angus Ranch and has earned Pathfinder status with a production record birth ratio of 5/97, a nursing ratio of 5/107 and a yearling ratio of 3/102. Big Power: Explosive body capacity, ample bone, structural soundness and fluent mobility. Top 1% for hoof claw and angle EPDs. Top 1% for weaning and Yearling EPDs.



LOT 2A

**TEN PACKAGES OF
TEN STRAWS**

STORED AT BOW VALLEY GENETICS
QUALIFIED FOR CAN

CONSIGNED BY PEAK DOT RANCH LTD.
CARSON: 306-266-4414
CLAY: 306-266-4411



LOT 3

CONSIGNED BY 719 CATTLE



HUMMEL SOUTH AMERICA

COLEMAN DONNA 2588 AAA 20419862 // 2588 // 07/04/2022

DON APARICIO SERRUCHO57 MAXI	S A V PRESIDENT 6847
HUMMEL SOUTH AMERICA	COLEMAN DONNA 8255
RUBETA FONTANA 7567-T/E-	COLEMAN DONNA 3125
CE: 6 // BW: 1.7 // WW: 67 // YW: 112 // MILK: 22	

A sale feature to any sale in the land, we are proud to offer Donna 2588 to Canada. Purchased alongside her mother at the record breaking Coleman Female Sale, this South America daughter could be the first one to stand ground in Canada. With semen never going to be available in Canada & valued at \$3000 per unit in the states you're buying an exclusive pedigree to this stunning looking female. The Donna cow family at Coleman's has made them a household name around the world with the famed 714 down on the bottom side of the pedigree. Her mother 8255 was selected for her incredible udder, adequate frame & special kind of maternal look. Never before have we been so excited about offering a female literally from the cutting of angus genetics, and take note of her young age as only a July born!

COLEMAN DONNA 8255 GENETICS



COLEMAN GLACIER 041 X COLEMAN DONNA 8255

PE CE: 4.5 // BW: 1.9 // WW: 67 //
YW: 118 // MILK: 30

ONE PACKAGE OF THREE EMBRYOS

STORED AT BOVITEQ.
QUALIFIED FOR CAN AND USA

An opportunity to buy into the famed Donna family by the popular Glacier bull who's semen is also rare and very valuable. **GUARANTEE ONE PREGNANCY IF IMPLANTED BY A CERTIFIED TECHNICIAN.**



GLACIER



CONNEALY CRAFTSMAN X COLEMAN DONNA 8255

PE CE: 6.5 // BW: 1.9 // WW: 73 //
YW: 126 // MILK: 35

ONE PACKAGE OF THREE SEXED FEMALE EMBRYOS

STORED AT BOVITEQ.
QUALIFIED FOR CAN AND USA

Sexed eggs by the \$500,000 craftsman who is sired by Sitz Resilient which offer outcross pedigree and not readily available in Canada. Incorporate the Donna cow family where you can. **GUARANTEE ONE PREGNANCY IF IMPLANTED BY A CERTIFIED TECHNICIAN.**



CRAFTSMAN

HF TIBBIE 205F | HF STORM CENTER 26D X HF TIBBIE 14D



LOT 4

THE RIGHT TO FLUSH

**GUARANTEEING 6 VIABLE EMBRYOS
WITH AN OPEN TOP, TO THE BULL OF
YOUR CHOICE OR ANY BULL IN THE
HAMILTON FARMS BULL BATTERY.**

CONSIGNED BY HAMILTON FARMS

ROB: 403-540-8291

GAIL: 403-540-8291

JOEL: 403-808-6341

Here is an opportunity to acquire a flush on a cow family that has become a household name in the Angus breed in Canada. The Tibbie cow family has become one of the top income producing females in Hamilton Farm's history. HF Tiger 5T is doubled up on both sides of the pedigree which adds so much predictability in regards to feet, udder, phenotype and disposition. A number of sale toppers have resulted from this pedigree, including HF Mastermind 98H x Showman (a maternal brother), sold to Bar-E-L and Cowtrax for \$30,000, a Tiger son HF Who's That sold to Minert-Simonson in Nebraska for \$40,000 and Tibbie's sire, HF Storm Center 26D sold to Sun Rise Simmentals for \$35,000 for 2/3 interest. Pictured is a daughter of Tibbie 205F that sold through the Angus Collection sale as a heifer calf for \$36,500 to MWC Investments. Also pictured is her bull calf, sired by KR Southbound who will definitely be one of the lead off bulls in the HF Bull Sale in March. He weaned off Tibbie 205F in Sept at 900 lbs, Adj 205 wt of 847 lbs and indexing 114.



**MATERNAL, PERFORMANCE,
LONGEVITY, AND LOW MAINTENANCE**



DAUGHTER / SOLD FOR \$36,500



SON / SELLING THIS SPRING



CE: 5.0 // BW: 1.7 // WW: 55 // YW: 90 // MILK: 34

The perfect blend of Erica 74A and Charlo that has proven to raise the kind that will be heard of for years to come. Martial law daughters were at the forefront of the "opportunity knocks" sale this fall and also in OKC with a feature female in the Duff Cattle Co string. Use Marital Law to improve feet, and Erica to inject udder quality, sheer power and phenotype.



**THE PERFECT BLEND OF POWER
WITH PHENOTYPE**



BAR-E-L ERICA 74A



\$37,000 DAUGHTER



DAUGHTER



LOT 5

**FIVE PACKAGE OF
FIVE UNITS**

STORED ON FARM
CANADIAN USE ONLY.

CONSIGNED BY BLAIRS.AG CATTLE CO.
KEVIN: 306-365-7922

RAIL LINE GERTIE 20K



CONSIGNED BY RAIL LINE FARMS
BRAD: 519-357-5469
PAUL: 519-357-0884



MATERNAL SISTER

2277611 // RLFA 20K // 02/04/2022

HA PRIME CUT 4493 | S A V REGISTRY 2831
U2 BRADY 182E | **JL GERTIE 6190**
U2 ERELITE 52Z | JL GERTIE 1046
CE: 6.0 // BW: 1.2 // WW: 65 // YW: 105 // MILK: 22

Right off the top of the replacement pen comes this April sweetheart. Her mother (6190) was the high selling female in the '21 LLB female sale and has made her way to the donor pen here at RLF. Her massive body shape, superb udder and maternal lineage is the kind we want to make more of. The same day we purchased 6190 her daughter also sold for \$13,500 to insure her producing capabilities. 6190 carries a huge 112 weaning ratio with a low BW EPD to make sure all the bases are covered. The combination of Registry, F.A & Brady going back to the same cow family as the \$140,000 U2 high seller Erelite 109Z make for an exciting future.



**AN EXCITING FUTURE FROM
PROVEN PRODUCERS**



JL GERTIE 6190



ONE PACKAGE OF THREE EMBRYOS

STORED AT HEARTLAND
VERTERINARY SERVICES
QUALIFIED FOR CAN AND USA



TANKER

LTVF TANKER 14 X JL GERTIE 6190

PE CE: 6.5 // BW: 0.9 // WW: 75 //
YW: 132 // MILK: 26

Phenotype meets numbers in this mating . Tanker being one of the popular upcoming bulls in the Peak Dot program with many ET calves coming, you know they will be popular. **GUARANTEE ONE PREGNANCY IF IMPLANTED BY A CERTIFIED TECHNICIAN.**



ONE PACKAGE OF THREE EMBRYOS

STORED AT HEARTLAND
VERTERINARY SERVICES
QUALIFIED FOR CAN AND USA



STERLING

S A V STERLING 1766 X JL GERTIE 6190

PE CE: 3.0 // BW: 2.0 // WW: 76 //
YW: 133 // MILK: 17

Sterling has been quoted one of the most eye appealing sires to ever come out of the SAV program. Mated to the power of 6190, this should be the ideal match. **GUARANTEE ONE PREGNANCY IF IMPLANTED BY A CERTIFIED TECHNICIAN.**



LOT 7A

**ONE PACKAGE OF
FOUR UNITS**

SITZ RESILIENT 10208

CE: 9.0 // BW: 0.3 // WW: 80 //

YW: 142 // MILK: 22

STORED ON FARM.

These two Stellar sons are the talk of Canada for their outcross pedigree combined with chart topping numbers. Their progeny have highly sought after and is embryo transfer is in your future, consider these brothers!

**CONSIGNED BY LYNDEN MANOR FARM
GLEN: 416-526-5428**



LOT 7B

**ONE PACKAGE OF
FIVE UNITS**

SITZ BARRICADE 632F

CE: -1.0 // BW: 4.2 // WW: 90 //

YW: 154 // MILK: 18

STORED ON FARM

CONSIGNED BY 719 CATTLE

**HARD TO COME BY
SITZ BROTHERS**



**CRAFTSMAN / \$500,000 RESILIENT
SON**



BARRICADE DAUGHTER



STELLAR / SIRE OF 7A AND 7B



CE: 11.0 // BW: 0.6 // WW: 43 // YW: 61 // MILK: 14

"Hummel Roberto" is the chosen one out of the second set of calves that Hummel Livestock brought up from Argentina as embryos. Offspring out of the first set of these Argentina-based genetics are setting record sales at Coleman Angus and Sadler Ranches. We expect nothing less from Roberto. He is out of one of the most decorated show bulls in South America and a cow that has proven herself time and time again at El Volcan, one of the most respected Angus operations in Argentina. Roberto represents real-world performance with enough look to get along in the showring. Who would have ever thought the two worlds could align once again?



THE CHOSEN ONE



*SOUTH AMERICA / PATERNAL
BROTHER*



LOT 8

**TEN PACKAGE OF
FIVE UNITS**

SEMEN IS STORED ON FARM.

**CONSIGNED BY KEMP BROS. AND
HUMMEL LIVESOTCK
DAVE: 905-404-6490
JEFF: 705-928-6204**

BROOKING GOLD COIN 8069 X S A V BLACKCAP MAY 4610



LOT 9

ONE PACKAGE OF THREE IVF EMBRYOS

**GUARANTEE ONE PREGNANCY
IF IMPLANTED BY A CERTIFIED
TECHNICIAN.**

STORED AT SOUTHWEST GENETICS.
EMBRYOS ARE QUALIFIED FOR CAN.

**CONSIGNEE BY SCHWAN ANGUS
RANCH**
TY: 306-774-4494
BRENDA: 306-741-2166

CE: -1.5 // BW: 4.1 // WW: 71 // YW: 116 // MILK: 20

S A V Blackcap May 4610 has created a story of her own. She is a full flush sister in blood to the \$260,000 S A V Cutting Edge 4857, a maternal sister to Genex sires S A V Priority7283, S A V Brand Name 9115 and S A V Regard 4863 plus her first son Jassen Fully Charged 7076 commanded \$66,00 in 2018 and her daughter commanded \$22,000 in 2022 at the All Stars Angus Sale during Agribition. This exciting mating with the \$50,000 Brooking Gold Coin 8069 who boasts loads of muscle, power and style and is backed by the \$47,500 S A V Emblynnette 4233, who is an elite donor at Brooking Angus Ranch. These will be the last embryos to sell out of S A V Blackcap May 4610.



THE LAST OPPORTUNITY FROM A STORIED FEMALE



BROOKING GOLD COIN 8069



DAM OF SIRE



DAUGHTER OF 4610

S A V MAGNUM 1335 X S A V MADAME PRIDE 7025



SAV Madame Pride 7025 is a 6th generation embryo donor from Schaff Angus Valley with a special distinction of being the last daughter born from the maternal Matriarch Madame Pride 0075. 7025 is a 3/4 sibling to the great SAV America 8018 that sold for 1.51 million that everyone knows. She's a deep and broody cow from top to bottom and has a beautiful udder top it all off. She is a true breeding piece and we are offering embryos sired by SAV Magnum 1335 the 345,000\$ lead off bull from the 2022 sale. The possibilities are endless from this Madame Pride cow!



**6TH GENERATION
S A V DONOR**



MAGNUM



LOT 10

**ONE PACKAGE OF
THREE IVF EMBRYOS**

**GUARANTEE ONE PREGNANCY
IF IMPLANTED BY A CERTIFIED
TECHNICIAN.**

STORED AT TRANS OVA, IOWA
EMBRYOS ARE QUALIFIED FOR CAN AND USA

CONSIGNED BY HEATHCOTE ANGUS
WYATT: 780-645-1686

COLEMAN DONNA 756



**TWO PACKAGES OF
THREE EMBRYOS**

**COLEMAN GLACIER 041 X
COLEMAN DONNA 756**

PE CE: 5.5 // BW: 1.2 // WW: 69 //
YW: 117 // MILK: 28



**ONE PACKAGE OF
THREE EMBRYOS**

**S A V RENOWN 3439 X
COLEMAN DONNA 756**

PE CE: 2.0 // BW: 1.6 // WW: 67 //
YW: 114 // MILK: 23

Coleman Donna 756 is a full sister to the \$480,000 valued Coleman Rock 7200 as well as the \$68,000 valued Coleman Donna 769, both selections of Ingram Angus. Being a direct daughter of Coleman Donna 714 and OCC Juneau 807J, her pedigree is as maternally stacked as you can find. She proves this by standing over perfect feet with a tremendous udder and a dead quiet disposition. She has tremendous body capacity as well as a classic angus head and a long deep body carrying into a strong hip. You'd be hard to draw up a cow any better! The \$270,000 1/4 interest Coleman Glacier needs no introduction. He has been tearing up the angus world this fall and winter. Both matings of eggs will have Renown behind them with the Glaciers having the extra punch of Donna 439! We feel both of these embryo groups will leave you with very similar calves that will be highly desirable! **GUARANTEE ONE PREGNANCY PER PACKAGE IF IMPLANTED BY A CERTIFIED TECHNICIAN. EMBRYOS ARE STORED AT TRANSOVA. QUALIFIED FOR CAN AND USA. CONSIGNED BY CASH CATTLE CO. NOLAN: 403-548-9561.**



GLACIER



RENOWN



FULL BROTHER TO 756

SITZ BARRICADE 632F X COLEMAN ABIGALE 7185



PE CE: 1.0 // BW: 4.0 // WW: 76 // YW: 140 // MILK: 20

Abigale 7185 is a cow that continues to impress me each and every day. Being a SAV Resource 1441 daughter out of Coleman Abigale 0277, a full sister to Coleman Charlo 0256, her pedigree is predictable and built exactly as we like them. As I write this she is about a week away from calving and is maintaining terrific condition while setting up a tremendous udder. She is a cow we are building heavily off of in our own program. These embryos are mated to Sitz Barricade 632F whose progeny have been in high demand this fall sale season. Semen is hard to come by on this bull so don't miss your chance to get some embryos from this mating!



CONTINUING TO IMPRESS



BARRICADE



LOT 12

**ONE PACKAGE OF
THREE IVF EMBRYOS**

**GUARANTEE ONE PREGNANCY
IF IMPLANTED BY A CERTIFIED
TECHNICIAN.**

STORED AT BOW VALLEY GENETICS
QUALIFIED FOR CAN

CONSIGNEE BY CASH CATTLE CO.
NOLAN: 403-548-9561



CE: 1.0 // BW: 4.0 // WW: 76 // YW: 140 // MILK: 20

This photogenic Primo daughter has all the ingredients to become a defining female. She was the royal elite sale high seller at \$25,000 and that same night sold a \$12,000 daughter by colossal just as a first calver. The maternal background to the blackbird cow family is simply impressive and our main reason for purchase. Her mother 5T who was never flushed has 13 registered progeny with many being high sellers over that 13 year span . The shape and design of ??? is incredible with a fantastic structure built in a sound package. Coming right into her prime we offer the right to flush her to the bull of your choice with an open top. ??? Has calved in January with a promising Proveness baby that will be exciting to watch come this fall.



LOT 13

**THE RIGHT TO
FLUSH**

**GUARANTEEING 6 VIABLE EMBRYOS
WITH AN OPEN TOP. FLUSH TO BE
CONDUCTED AT JDL CATTLE.**

**CONSIGNED BY PARKVIEW FARMS
MIKE: 780-387-6355**



**A MODEL ANGUS FEMALE FROM A
MODEL ANGUS PROGRAM**



\$12,000 DAUGHTER



MATERNAL SISTER



MATERNAL SISTER

MERIT JILT 131H



PACKAGE OF THREE EMBRYOS

**SCHIEFELBEIN GABLE 311 X
MERIT JILT 131H**

PE CE: 4.5 // BW: 2.5 // WW: 73 //
YW: 131 // MILK: 30



PACKAGE OF THREE EMBRYOS

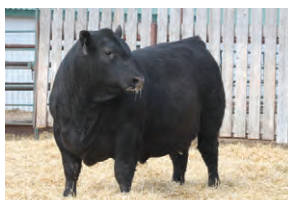
**SCHIEFELBEIN SHOWMAN 338 X
MERIT JILT 131H**

PE CE: 2.5 // BW: 2.4 // WW: 67 //
YW: 126 // MILK: 31

Jilt 131H was purchased as the high bred from the Merit female sale where she has turned out nothing but superb here in Miami. We watched 131H dominate the show road in '21 but what really drew us in was her dam. Coming highly recommended by Trent, her track record, paperwork & overall appearance was a no brainer. We've mated her to the hottest bulls that are available. Gable has made a lot of noise this year and we eagerly await some offspring. Showman semen is still bringing \$400 a unit and is a no miss sire. Either way you go these matings will click and generate profitability. **GUARANTEE ONE PREGNANCY PER PACKAGE OF THREE IF IMPLANTED BY A CERTIFIED TECHNICIAN. STORED AT BOW VALLEY GENETICS. CONSIGNED BY STEPLER FARMS AND DALE MCKAY. ANDRE: 204-750-1951.**



GABLE



GABLE



SHOWMAN



CE: 9.0 // BW: 0.7 // WW: 38 // YW: 61 // MILK: 28

Bar S Range Boss is one of the most dominant sires of show winners and sale toppers in recent history. Even more impressive, his sons and daughters are producing show winners and sale toppers as well. He sires saleable bulls and females you'll be proud to own. His consistency is undoubtedly a result of his line bred pedigree. Very little Range Boss semen has ever been offered on the open market. Here's a great opportunity to get a piece of a LEGEND.



LOT 15

**FOUR PACKAGES
OF FIVE UNITS**

STORED AT BOW VALLEY GENETICS.
CANADIAN USE ONLY.

CONSIGNED BY MERIT CATTLE CO.
TRENT: 306-869-7207
JANELLE: 306-869-6993
GARRETT: 306-815-7078



**DOMINANT SIRE OF SHOW
WINNERS AND SALE TOPPERS**



DAUGHTER



DAUGHTER



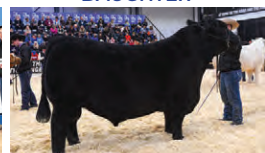
DAUGHTER



DAUGHTER



SON



SON

COLEMAN GLACIER 041 X BAR-E-L ERICA 74A



PE CE: 4.0 // BW: 2.8 // WW: 66 // YW: 113 // MILK: 29

- An exciting sale feature here with Erica 74A being Canada's most decorated Angus female
- 74A's remarkable progeny history is stacked full of some of the best cattle ever produced
- No matter the sex her offspring rise to the top & mated to Glacier only enhances the profitability these eggs carry
- Glacier is the talk of the Angus world for so many reasons and matched with the impeccable Erica 74A, we expect big things out of this mating



**CANADA'S MOST
DECORATED**



ERICA DAUGHTER



GLACIER



ERICA SON



LOT 16

**ONE PACKAGE OF
THREE IVF EMBRYOS**

**GUARANTEE ONE PREGNANCY
IF IMPLANTED BY A CERTIFIED
TECHNICIAN.**

STORED AT PEAK VETERINARY SERVICES

**CONSIGNED BY G2 CATTLE
BENJI: 306-421-0421**

S A V 004 DENSITY 4336 X PVA BLACKCAP MAY B845



LOT 17

TWO PACKAGES OF THREE EMBRYOS

**GUARANTEE ONE PREGNANCY PER
PACKAGE IF IMPLANTED BY A CERTIFIED
TECHNICIAN.**

EMBRYOS ARE STORED AT OXFORD BOVINE
VETERINARY SERVICES. EXPORT QUALIFIED.

**CONSIGNEE BY MEADOW BRIDGE
ANGUS
JJ: 519-275-1739**

PE CE: 3.0 // BW: 3.5 // WW: 57 // YW: 98 // MILK: 20

A mating that stacks our breeding goals...Power and Maternal!!! SAV Density...arguably the breeds greatest female maker mated with Blackcap May 845 one of our most powerfull & elegant young cows from the heart of the breeds all time income producing family. 4 pathfinder sires behind this mating.



**STACKING OUR BREEDING GOALS
FOR POWER AND MATERNAL**



DENSITY

S A V RENOVATION 6822 X MBA MADAME PRIDE 9140



PE CE: 5.5 // BW: 1.9 // WW: 69 // YW: 121 // MILK: 22

A one time offering of the herdbull phenomenon SAV Renovation 6822 x MBA Madame Pride 9140 our foundation of the Madame Pride cow family...the deep bodied muscular & functional progeny of Reno combined with the body type & maternal design of 9140 will be a no miss. Grandam is a sister to the world record selling bull America and the great grandam is one of the most recognizable cows in the world. A unique blending of Reno x 316 x International x Madame Pride 0075 this cow will play a big part in the future at Meadow Bridge



**THE FUTURE OF MEADOW BRIDGE
ANGUS**



RENOVATION



LOT 18

**ONE PACKAGE OF
THREE EMBRYOS**

**GUARANTEE ONE PREGNANCY PER
PACKAGE IF IMPLANTED BY A CERTIFIED
TECHNICIAN.**

EMBRYOS ARE STORED AT OXFORD BOVINE
VETERINARY SERVICES. EXPORT QUALIFIED.

**CONSIGNED BY MEADOW BRIDGE
ANGUS**

JJ: 519-275-1739

S A V RESOURCE 1441 X PFLC PURE PRIDE 16B



LOT 19

TWO PACKAGES OF THREE EMBRYOS

**GUARANTEE ONE PREGNANCY PER
PACKAGE IF IMPLANTED BY A CERTIFIED
TECHNICIAN.**

EMBRYOS ARE STORED AT OXFORD BOVINE
VETERINARY SERVICES. EXPORT QUALIFIED.

**CONSIGNEE BY MEADOW BRIDGE
ANGUS
JJ: 519-275-1739**

PE CE: 4.0 // BW: 1.9 // WW: 59 // YW: 107 // MILK: 25

A mating of the registration leading sire SAV Resource x Pure Pride 16b a \$13,000 high seller from last falls AAC...16B is a long spined gorgeous female with daughters at Parkview & Smith Creek Angus her Resource sister at Meadow Bridge is a cornerstone donor. this mating combines 6 generations of pathfinder sires back to CAF Pure Pride CF 90 the EXT sired dam of BC Matrix



**COMBINING 6 GENERATIONS OF
PATHFINDER SIRES**



RESOURCE

JL BLACKCAP MAY 6354



PACKAGE OF THREE EMBRYOS

**B/R MVP 5247 X
JL BLACKCAP MAY 6354**

PE CE: 8.5 // BW: 1.0 // WW: 63 //
YW: 114 // MILK: 34

**GUARANTEE ONE PREGNANCY PER
PACKAGE IF IMPLANTED BY A CERTIFIED
TECHNICIAN.**

STORED ON FARM

**CONSIGNED BY WORTH-MOR CATTLE
KYLE: 705-768-3560**



PACKAGE OF THREE EMBRYOS

**POSS RAWHIDE X
JL BLACKCAP MAY 6354**

PE CE: 9.0 // BW: 0.5 // WW: 71 //
YW: 122 // MILK: 34



PACKAGE OF THREE EMBRYOS

**ELLINGSON PROLIFIC X
JL BLACKCAP MAY 6354**

PE CE: 5.5 // BW: 1.9 // WW: 76 //
YW: 131 // MILK: 31



PROLIFIC

- This superior cow demonstrates just why this cow family is sought after as she was a \$20,000 purchase from JL
- Gorgeous uddered, stunning profile, and ultra feminine with body mass
- She raised three herd bulls walking with her best efforts now on the ground
- The three sires represented all bring something to the equation, and are rare to Canada
- Please note: the first ever Prolifics to sell anywhere, this bull is gonna make some noise

SCHIEFELBEIN GABLE 311 X PEAK DOT ERICA 358D



ONE PACKAGE OF FIVE EMBRYOS

**GUARANTEE TWO PREGNANCIES
IF IMPLANTED BY A CERTIFIED
TECHNICIAN.**

STORED AT DAVIS RAIRDAN INTERNATIONAL
EMBRYOS ARE QUALIFIED FOR CAN AND USA

CONSIGNED BY PEAK DOT RANCH LTD.
CARSON: 306-266-4414
CLAY: 306-266-4411

PE CE: 5.5 // BW: 1.9 // WW: 79 // YW: 141 // MILK: 25

Peak Dot Erica 358D is a female you can build around with confidence. Like many of the Vision Unanimous daughters she is a stout made, deep bodied female with a great udder. Her dam has raised several featured top selling bulls and represents maternal, production, fertility and longevity. They say it all starts with the mother cow and with Peak Dot Erica 358D perfect udder, excellent feet and great looks this mating to Gable will be a valuable start or addition to any program out there. Gable caught the attention of cattlemen all across the country last fall when a semen interest sold for \$120,500 in the Fall Peak Dot Ranch Bull and Female Sale. His tremendous performance, thick body, added muscle shape with a unique combination of phenotype and an incredible number package have made him one of the most sought after bulls in the Angus Breed.



SCHIEFELBEIN GABLE 311



SCHIEFELBEIN GABLE 311

SCHIEFELBEIN GABLE 311 X PEAK DOT BARBARA 807H



PE CE: 5.0 // BW: 1.8 // WW: 84 // YW: 139 // MILK: 26

Peak Dot Barbara 807H is a model female from our program. Perfect udder, perfect feet, long level hip, wide based and very sound structured. Her dam Peak Dot Barbara 483A is a proven donor with 35 progeny. We have an extremely nice set of daughters at Peak Dot and her sons have been topping our bull sales. We think the world of this mating to Gable and would expect to see sons with an abundance of muscle, body shape and depth of rib and daughters that are easy fleshing, deep ribbed with beautiful udders.



**A MODEL ANGUS FEMALE FROM A
MODEL ANGUS PROGRAM**



SCHIEFELBEIN GABLE 311



SCHIEFELBEIN GABLE 311



LOT 22

**ONE PACKAGE OF
FIVE EMBRYOS**

**GUARANTEE TWO PREGNANCIES
IF IMPLANTED BY A CERTIFIED
TECHNICIAN.**

STORED AT DAVIS RAIDAN INTERNATIONAL
EMBRYOS ARE QUALIFIED FOR CAN AND USA

CONSIGNEE BY PEAK DOT RANCH LTD.
CARSON: 306-266-4414
CLAY: 306-266-4411

SITZ BARRICADE 632F X BLAIR'S 2408 SARITA 547J



LOT 23

**ONE PACKAGE OF
THREE EMBRYOS**

**GUARANTEE TWO PREGNANCIES
IF IMPLANTED BY A CERTIFIED
TECHNICIAN.**

**STORED AT DAVIS-RAIRDAN EMBRYO
TRANSPLANTS**

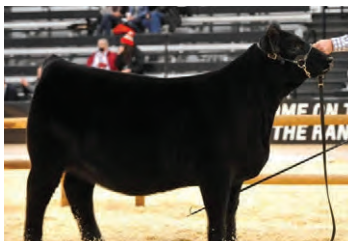
**CONSIGNED BY HIDDEN VALLEY BEEF
PETER: 659-734-5841**

PE CE: 2.5 // BW: 3.4 // WW: 70 // YW: 125 // MILK: 19

Sarita 547J needs no introduction. This outstanding Agribition Champion was purchased by us for \$100,000 in partnership with Ashwood Cattle Company. Sarita offers impressive and unique Argentinian lines, her dam is deemed as one of the most powerful females to ever show at Palermo, where she was crowned Champion Female. Combine that with her sire being considered the absolute number one for female production in Argentina. This mating to the growth and performance sire Barricade will be unmatched.



ARGENTINE BEAUTY



BARRICADE



CE: 2.0 // BW: 3.7 // WW: 60 // YW: 108 // MILK: 29

An exciting opportunity to acquire semen on one of the most talked about bulls of the 2022 bull sale season, "Private Stock 879j". He is a two time Division Champion at CWA. First as a calf and again as a yearling, as well he was shown at the Toronto Royal where he earned Title of 2022 Reserve National Champion Angus Bull. His maternal brother, "Elevation 100k", sired by Bloodline, was also a division champion at the 2022 CWA. We feel their dam, Erica 561g has only began to show us what she can do. In her first year of production she earned just shy of \$100,000 on her first 4 progeny. Private Stock calves have just began to hit the ground and boy are they exciting. They are born moderate and have tons of vigor. They display an excellent hair coat and already, at only a couple weeks of age, have a commanding presence to them. The future is exciting! Grab hold of the first semen to sell in 2023!



THREE PACKAGES OF TEN STRAWS AND FOUR PACKAGES OF FIVE STRAWS

STORED AT BOW VALLEY GENETICS

CONSIGNED BY WORTH-MOR CATTLE,
HOLLINGER LAND AND CATTLE, POPLAR
MEADOWS ANGUS, AND CSI ANGUS

KYLE: 705-768-3560

CHAD: 306-331-0302

TANYA: 250-845-8474

ROGER: 306-536-6112



CWA CHAMPION YEARLING BULL



**NATIONAL ANGUS RESERVE
CHAMPION BULL**



DENSITY



LOT 25A

SEXED FEMALE

S A V 004 DENSITY 4336

**S A V 8180 TRAVELER 004 X
S A V MAY 7238**

CE: 7.0 // BW: 3.8 // WW: 49 //

YW: 88 // MILK: 20

LOT 25A-1: SIX UNITS | CONSIGNED BY JIMMY JOE HENDERSON | 403-740-9270 | STORED AT BOW VALLEY GENETICS.

LOT 24A-2: THREE UNITS | CONSIGNED BY WORTH-MOR CATTLE | 705-768-3560 | STORED ON FARM



FINAL ANSWER



LOT 25E

S A V FINAL ANSWER 0035

**SITZ TRAVELER 8180 X
S A V EMULOUS 8145**

THREE PACKAGES OF TEN UNITS

CE: 13.0 // BW: -1.3 // WW: 55 //

YW: 94 // MILK: 23

STORED AT ALTA GENETICS
CONSIGNED BY D & N LIVESTOCK
DAVE: 306-736-8698 BEN: 306-495-7727



LOT 25B

CONVENTIONAL

S A V 004 DENSITY 4336

ONE PACKAGE OF TEN UNITS

STORED ALTA GENETICS

CONSIGNED BY D & N LIVESTOCK

DAVE: 306-736-8698 BEN: 306-495-7727



LOT 25C

S A V NET WORTH 4200

**S A V 8180 TRAVELER 004 X
S A V MAY 2410**

ONE PACKAGE OF FIVE UNITS

CE: 2.0 // BW: 4.3 // WW: 53 //

YW: 100 // MILK: 28

STORED ON FARM
CONSIGNED BY STRONGBOW FARMS
DEVON: 204-747-4371 HEATHER: 204-747-4237



RENOWN



LOT 25F

S A V RENOWN 3439

**RITO 707 OF IDEAL 3407 7075 X
S A V BLACKCAP MAY 4136**

ONE PACKAGE OF FIVE UNITS

CE: -3.0 // BW: 2.8 // WW: 69 //

YW: 124 // MILK: 20

STORED AT ALTA GENETICS
CONSIGNED BY D & N LIVESTOCK
DAVE: 306-736-8698 BEN: 306-495-7727

**“PROVEN, RARE, AND HIGHLY
SOUGHT AFTER S A V BULLS”**



NET WORTH



LOT 25D

S A V BISMARCK 5682

**G A R GRID MAKER X
S A V ABIGALE 0451**

ONE PACKAGE OF FIVE SEXED FEMALE UNITS

CE: 12.0 // BW: 0.0 // WW: 53 //

YW: 89 // MILK: 21

STORED ON FARM
CONSIGNED BY NEILCAIRN ANGUS
ROB: 519-998-1985



BISMARCK



LOT 25G

S A V RESOURCE 1441

**RITO 707 OF IDEAL 3407 7075 X
S A V BLACKCAP MAY 4136**

TWO PACKAGES OF TEN UNITS
CE: 0.0 // BW: 4.0 // WW: 69 //
YW: 131 // MILK: 17

STORED ALTA GENETICS
CONSIGNED BY D & N LIVESTOCK
DAVE: 306-736-8698
BEN: 306-495-7727



LOT 25H

S A V RAINFALL 6846

**COLEMAN CHARLO 0256 X
S A V BLACKCAP MAY 4136**

FIVE PACKAGES OF TEN UNITS
CE: 7.0 // BW: 0.4 // WW: 56 //
YW: 107 // MILK: 27

STORED ON FARM OR AT ALTA GENETICS
CONSIGNED BY 719 LIVESTOCK



LOT 25I

S A V AMERICA 8018

**S A V PRESIDENT 6847 X
S A V MADAME PRIDE 0075**

CE: 1.0 // BW: 4.6 // WW: 80 //
YW: 135 // MILK: 21

LOT 25I-1: TEN UNITS | CONSIGNED BY CASH CATTLE CO. | NOLAN: 403-548-9561 | STORED AT MILLENNIUM GENETICS

LOT 25I-2: TEN UNITS | CONSIGNED BY 719 CATTLE | STORED AT ALTA GENETICS



AMERICA



LOT 25J

S A V PRESIDENT 6847

**COLEMAN CHARLO 0256 X
S A V BLACKCAP MAY 4136**

**TWO PACKAGES OF TEN UNITS AND ONE
PACKAGE OF FIVE**

CE: 4.0 // BW: 3.4 // WW: 73 //
YW: 123 // MILK: 23

STORED AT MILLENNIUM GENETICS
CONSIGNED BY CASH CATTLE CO.
NOLAN: 403-548-9561



PEDIGREE



LOT 25K

S A V PEDIGREE 4834

**S A V PIONEER 7301 X
S A V BLACKCAP MAY 4136**

ONE PACKAGES OF TEN UNITS
CE: 5.0 // BW: 2.4 // WW: 64 //
YW: 110 // MILK: 24

STORED AT SOUTHWEST GENETICS
CONSIGNED BY SCHWAN ANGUS RANCH
TY: 306-774-4494
BRENDA: 306-741-2166



PRESIDENT



LOT 26

**FIVE PACKAGE OF
TEN UNITS**

STORED AT BOW VALLEY GENETICS.

CONSIGNED BY JPM FARMS LTD
JP: 306-648-7935

CE: 4.0 // BW: 1.9 // WW: 71 // YW: 128 // MILK: 37

Registration number 2252780. Born 15/02/2021. Ellingson Open Range was a \$47,500 sale highlight from Ellingson's 2022 Production Sale. He is a direct son of EA Bells Girl 2181, the iconic donor that was the "Pick of the EA Herd" in 2020, selected by Ingram Angus. Open Range's dam has quickly become a cornerstone of the Ellingson program. There are five full sisters retained in the EA replacement pen and countless half sisters in production. At the 2021 bull sale a maternal sister produced the Lot 1 sale feature Ellingson Badlands 0285 which sold for \$80,000. Look for Ellingson Open Range to improve hoof and structural integrity, maternal qualities, fertility and calving ease with extra performance. Open Range will see heavy use in the Ellingson and JPM Farms programs in 2023.



**FIRST AND ONLY
OPPORTUNITY**



DAM

JL FLORESSA 5531



LOT 27A

JL FLORESSA 5531

THE RIGHT TO FLUSH

**S A V 004 DENSITY 4336 X
HF FLORESSA 42P**

CE: 5.0 // BW: 3.0 // WW: 50 //
YW: 86 // MILK: 28

JL Floressa 531c is one smoking hot female! An elegant fronted female that flows flawlessly into a bold sprung robust rib cage and a wide pin set. The only heifer we have sold to date from her topped the GF & Friends In it to win it sale to Parkview where she is currently the dam of their top bull calf. Opportunities are endless here, mate her for a show stopper or big time producer you choose. **SELLING THE RIGHT TO ONE SUCCESSFUL FLUSH OF 6 EMBRYOS WITH AN OPEN TOP. CONSIGNED BY GILCHRIST FARMS AND LARCH GROVE. BRAD: 519-440-6720.**



DAUGHTER OF 5531



MATERNAL SISTER TO 5531



BISMARCK



LOT 27B

PACKAGE OF TWO EMBRYOS

**S A V BISMARCK 5682 X
JL FLORESSA 5531**

PE CE: 8.5 // BW: 1.5 // WW: 52 //
YW: 88 // MILK: 25

An opportunity to get in on one of the hottest Density donors available. These sexed female embryos by Bismarck are where it is at if your looking to make a breeding piece who will undoubtedly be as maternal as you can make one.

S A V 004 DENSITY 4336 X BLAIR'S MERCEDES 717C



LOT 28

**ONE PACKAGE OF THREE
SEXED FEMALE EMBRYOS**

**GUARANTEE ONE PREGNANCY
IF IMPLANTED BY A CERTIFIED
TECHNICIAN.**

STORED AT BOW VALLEY GENETICS.

**CONSIGNEE BY D & N LIVESTOCK
DAVE: 306-736-8698
BEN: 306-495-7727**

PE CE: 4.3 // BW: 2.2 // WW: 46 // YW: 81 // MILK: 22

An intriguing mating from our \$21,000 717C donor to the elite female maker Density. These eggs are sexed female. This mating is sure to produce high quality females. We have a full sister to this mating that is phenotypically correct and exemplifies all the right traits in a replacement heifer and a potential donor.



**THE KING OF ANGUS CATTLE
AND THE QUEEN OF PRODUCTION**



DENSITY



RESOURCE / SIRE OF DAM

REHORST BLACKCAP MAY 073H



DAM OF BLACKCAP MAY 073H



PACKAGE OF THREE EMBRYOS

**S A V STERLING 1766 X
REHORST BLACKCAP MAY 073H**

PE CE: 1.0 // BW: 2.8 // WW: 84 //
YW: 144 // MILK: 19



PACKAGE OF THREE EMBRYOS

**S A V RAINFALL 6846 X
REHORST BLACKCAP MAY 073H**

PE CE: 5.0 // BW: 1.5 // WW: 63 //
YW: 111 // MILK: 26

- 073H was our feature purchase of AAC '21 for \$58,000 where we fell in love with pedigree, looks and genetic merit
- she's done everything you could ask for a first calver raising a superior FA baby this year
- her dam 273 carries a long list of attributes amongst 073H
- Rainfall is a bull we are sure of, we love the way her calves and have daughters milking now that are remarkable
- Sterling comes with a different twist in pedigree & should be the perfect match on the blackcap May s

GUARANTEE ONE PREGNANCY PER PACKAGE OF THREE IF IMPLANTED BY A CERTIFIED TECHNICIAN. STORED AT HEARTLAND VETERINARY SERVICES. CONSIGNED BY CARELEA ANGUS. HOWARD: 519-831-9892



DAM OF EMBRYOS



STERLING



RAINFALL

JL FOREVER LADY 6104



LOT 30A

PACKAGE OF THREE EMBRYOS

**S A V PRESIDENT 6847 X
JL FOREVER LADY 6104**

PE CE: 3.5 // BW: 2.5 // WW: 66 //
YW: 118 // MILK: 27



LOT 30B

PACKAGE OF THREE EMBRYOS

**MUSGRAVE 316 STUNNER X
JL FOREVER LADY 6104D**

PE CE: 4.5 // BW: 0.8 // WW: 64 //
YW: 115 // MILK: 33

- A past \$44,000 female in 2017, her full sister commanded \$42,500 at the JL dispersal
- Past daughters have topped the AAC with 2 daughters retained in herd
- Perfect EPD spread with the foundation cow 1280 anchoring the pedigree
- A model female with loads of potential in a genetic excellence package

GUARANTEE ONE PREGNANCY PER PACKAGE OF THREE IF IMPLANTED BY A CERTIFIED TECHNICIAN. STORED ON FARM. CONSIGNED BY REHORST FARMS LTD. ADRIAN: 519-357-7077.



6104 AS A BRED



FULL SISTER TO 30A EMBRYOS



FULL SISTER TO 30A EMBRYOS

JL LADY 3059



PACKAGE OF THREE EMBRYOS

**S A V BLOODLINE 9578 X
JL LADY 3059**

PE CE: -3.0 // BW: 4.5 // WW: 63 //
YW: 115 // MILK: 19

**GUARANTEE ONE PREGNANCY IF
IMPLANTED BY A CERTIFIED TECHNICIAN.**

LOT 31 A AND B STORED AT BOVITEQ. LOT 31C IS
STORED AT HEARTLAND VETERINARY SERVICES.

**CONSIGNED BY REHORST FARMS LTD.
ADRIAN: 519-357-7077**



PACKAGE OF THREE EMBRYOS

**MOHNEN GENERAL 548 X
JL LADY 3059**

PE CE: 0.0 // BW: 3.6 // WW: 66 //
YW: 109 // MILK: 25

- Lady 3059 has made her way to the top of our donor pen with no surprise
- She was the \$30,000 lead off female of the historic JL dispersal
- Her impeccable udder, great feet and awesome head are just the beginning of her attributes
- We expect a group of ET s coming this spring and are excited to have her mated to such intriguing sires
- The exciting Sterling bull is new and fresh with high recommendations, Bloodline incorporates the Rainfall influence we love and General cattle have become a forefront, just look at Lot 1 in this very book



PACKAGE OF THREE EMBRYOS

**S A V STERLING 1766 X
JL LADY 3059**

PE CE: -2.0 // BW: 3.8 // WW: 74 //
YW: 129 // MILK: 17

S A V BISMARCK 5682 X S A V EMBLYNETTE 9811



S A V MADAME PRIDE 2369 / DAM OF 9811



LOT 32

**ONE PACKAGE OF THREE
SEXED FEMALE EMBRYOS**

**GUARANTEE ONE PREGNANCY
IF IMPLANTED BY A CERTIFIED
TECHNICIAN.**

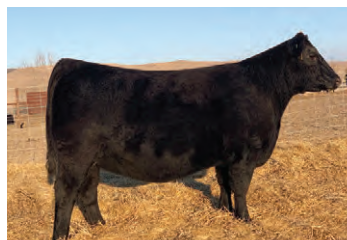
**STORED AT PEAK VETERINARY HEALTH
CONSIGNED BY DAVID JOHNSON
DAVID: 306-736-8631**

PE CE: 5.5 // BW: 1.3 // WW: 62 // YW: 111 // MILK: 29

- 9811 is a full flush sister to SAV Bloodline & was the lead off female in Schaffs 2020 Sale
- Exceptional numbers, maternal giants all throughout this mating
- Another flush sister has become a donor at Covey Hill - 9812 pictured
- Bismarck x Rainfall combination for superior udder quality and disposition



**MATERNAL GIANTS
THROUGHOUT**



FULL SISTER TO 9811



BISMARCK

JL FOREVER LADY 1280



FULL SIBLING TO LOT 33A



LOT 33A

TWO PACKAGES OF THREE EMBRYOS

**S A V RENOWN 3439 X
JL FOREVER LADY 1280**

PE CE: 4.0 // BW: 0.7 // WW: 57 //
YW: 108 // MILK: 31



LOT 33B

PACKAGE OF THREE EMBRYOS

**S A V FOUR SEASONS 5231 X
JL FOREVER LADY 1280**

PE CE: 6.5 // BW: 1.1 // WW: 46 //
YW: 86 // MILK: 34

- 1280 is an elite premier dam who was instrumental in the Johnson Livestock program
- The support photos display the full sibling matings to Renown amongst others
- 1280 herself is now deceased & carries a -1.4 BW EPD
- The Four Season mating is quite unique as well with him being a 7/8 s brother to Networkh

**GUARANTEE ONE PREGNANCY PER PACKAGE OF THREE IF IMPLANTED BY A CERTIFIED TECHNICIAN. STORED AT PEAK VETERINARY HEALTH.
CONSIGNED BY DAVID JOHNSON - 306-736-8631.**



DAUGHTER



DAUGHTER



RENOWN



FOUR SEASONS



LOT 34

**THE RIGHT TO
FLUSH**

GUARANTEEING 6 VIABLE EMBRYOS
WITH AN OPEN TOP. TERMS OF FLUSH:
HALF DOWN NOW, REMAINDER ONCE
FLUSH IS COMPLETED. SUCCESSFUL
BIDDER IS RESPONSIBLE FOR ALL
FLUSH COSTS.

CONSIGNED BY ELK RIDGE STOCK
FARMS

WADE: 204-859-0279

CE:1.0 // BW: 2.7 // WW: 56 // YW:102 // MILK: 28

4476 is a massive bodied female that is proven in every way. Her flush record is near 15 eggs per and she incorporates an outcross pedigree with whopping number figures. Multiple progeny are arriving off this female this spring in numerous herds with a daughter topping the "In It To Win It" sale last fall. This flush will be ready to go April 2023 with the option of using Scheilfbein Gable as we purchased a 10% share in him at the fall Peak Dot sale.



**PROVEN BEYOND
A DOUBT**



GABLE



DAUGHTER

LLB LENA 624C



PACKAGE OF THREE EMBRYOS

**SITZ BARRICADE 632F X
LLB LENA 624C**

PE CE: 5.5 // BW: 2.3 // WW: 70 //
YW: 120 // MILK: 22



PACKAGE OF THREE EMBRYOS

**S A V STERLING 1766 X
LLB LENA 624C**

PE CE: 5.5 // BW: 1.7 // WW: 74 //
YW: 129 // MILK: 20

As productive as we've had, Lena 624C checks all the boxes. Maternal, udder quality, feet, docile & just plain gorgeous to look at. We have daughter ready to calve in our herd that we love, Lena 625C has produced a \$15,000 bull & comes from the same cow family as the \$40,000 Lucknow bull. Barricade & Sterling come highly recommended & not easy to find, these planned matings are manufactured for profit. **GUARANTEE ONE PREGNANCY PER PACKAGE OF THREE IF IMPLANTED BY A CERTIFIED TECHNICIAN. STORED ON FARM AT KARALISHA CATTLE CO. CONSIGNED BY KARALISHA CATTLE CO. AND GILCHRIST FARMS. RANDY: 519-732-2774. BRAD: 519-440-6720.**



SON



BARRICADE



STERLING



DAUGHTER



LOT 36A

**ONE PACKAGE OF
FOUR UNITS**

CONLEY EXPRESS 7211

CE: -7.0 // BW: 4.3 // WW: 63 //

YW: 105 // MILK: 17

STORED ON FARM

CONSIGNED BY 719 CATTLE



LOT 36B

**ONE PACKAGE OF
ONE UNIT**

KR CASINO 6243

CE: -2.0 // BW: 4.9 // WW: 63 //

YW: 116 // MILK: 36

STORED ON FARM

**CONSIGNED BY ROLLING MEADOWS
CATTLE**

SHANE: 613-812-8974





DMM MAXIMUS 18G
NORTHERN VIEW SMW GUSTOV 3Z X
DMM MISS ESSENCE 5C

ONE PACKAGE OF FIVE UNITS
 CE: -17.0 // BW: 9.2 // WW: 94 //
 YW: 139 // MILK: 25

SEMEN IS STORED AT BOW VALLEY GENETICS.
 CONSIGNED BY JIMMY JOE HENDERSON
 JIMMY: 403-740-9270



SILVEIRAS STYLE 9303
GAMBLES HOT ROD X
SILVEIRAS ELBA 2520

ONE PACKAGE OF FOUR UNITS
 CE: 5.0 // BW: 2.9 // WW: 44 //
 YW: 77 // MILK: 14

STORED ON FARM OR CAN SHIP TO EASTGEN
 CONSIGNED BY WILLDINA FARMS
 JOHN: 905-432-0271



PVF INSIGHT 0129
S A V BRILLIANCE 8077 X
PVF MISSIE 790

????? UNITS
 CE: 3.0 // BW: 2.1 // WW: 62 //
 YW: 108 // MILK: 23

STORED ON FARM
 CONSIGNED BY CLARKE FAMILY FARM
 HUGH: 519-365-4026



B C LOOKOUT 7024
O C C LEGEND 616L X
GIBBET HILL MIGNONNE E37

ONE PACKAGE OF FIVE UNITS
 CE: 3.0 // BW: 2.3 // WW: 48 //
 YW: 79 // MILK: 16

STORED ON FARM
 CONSIGNED BY NU-HORIZON ANGUS
 KIERAN: 403-357-7648
 KODIE: 306-331-0384



PRODUCING SHOW RING CONTENDERS





FINAL PRODUCT



LOT 36G

CONNEALY FINAL PRODUCT

**CONNEALY PRODUCT 568 X
EBONISTA OF CONANGA 471**

TWO PACKAGES OF TEN UNITS

CE: 2.0 // BW: 0.7 // WW: 60 //

YW: 109 // MILK: 27

STORED ON FARM

CONSIGNED BY GILCHRIST FARMS

BRAD: 519-440-6720



PRIMO



LOT 36J

COLBURN PRIMO 5153

**DAMERON FIRST CLASS X
SILVEIRAS SARAS DREAM 1339**

ONE PACKAGE OF TEN UNITS

CE: 2.0 // BW: 3.7 // WW: 56 //

YW: 90 // MILK: 8

STORED AT SOUTHWEST GENETICS

CONSIGNED BY SCHWAN ANGUS RANCH

TY: 306-774-4494 BRENDA: 306-741-2166



LOT 36H

SILVEIRAS WATCHOUT 0514

**B C LOOKOUT 7024 X
SILVERIAS ELBA 6546**

ONE PACKAGE OF TEN UNITS

CE: 4.0 // BW: 2.2 // WW: 46 //

YW: 81 // MILK: 14

STORED ON FARM

CONSIGNED BY ROLLING MEADOWS CATTLE

SHANE: 613-812-8974



WATCHOUT



LOT 36I

BCII MLA NEXT UP 015

**SILVEIRAS STYLE 9303 X
R M A MISS EDGE 208**

TWO PACKAGES OF FIVE UNITS

CE: 2.0 // BW: 0.9 // WW: 38 //

YW: 58 // MILK: 28

STORED ON FARM

CONSIGNED BY ROLLING MEADOWS CATTLE

SHANE: 613-812-8974



NEXT UP



NORTHERN IMPROVEMENT



LOT 36K

NORTHERN IMPROVEMENT 4480 GF

**TC STOCKMAN 365 X
BLACKCAP OF R R 5367**

ONE PACKAGE OF THREE UNITS

CE: 9.0 // BW: -1.1 // WW: 33 //

YW: 57 // MILK: 28

STORED ON FARM

CONSIGNED BY NU-HORIZON ANGUS

KIERAN: 403-357-7648 KODIE: 306-331-0384

DEER VALLEY GROWTH FUND X JL SUSAN 4022



PE CE: 5.5 // BW: 1.4 // WW: 74 // YW: 136 // MILK: 27

Genetic excellence at its best here. Susan 4022 was our selection of the JL dispersal that has really come into her own. Long bodied with an abundance of milk in a low BW package being a daughter of the legend FA. Growth fund adds that extra jam and maintains that perfect udder we all come to love. The full sib to these eggs certainly created some stir at fallsview '22 this year and going to Ferme Gagnon in Quebec. Look at the numbers with that big spread from BW to YW and you'll love the type of cattle these genetics will raise you.



**GENETIC EXCELLENCE AT
ITS BEST**



GROWTH FUND



**FULL SISTER TO EMBRYOS / SOLD
FOR \$16,000 TO FERME GAGNON**



LOT 37

**ONE PACKAGE OF
FOUR EMBRYOS**

**GUARANTEE TWO PREGNANCIES
IF IMPLANTED BY A CERTIFIED
TECHNICIAN.**

STORED AT BOVITEQ.

CONSIGNEE BY 719 CATTLE

BUCHANAN'S BRUNO C656 X S&R PROVEN QUEEN J329



LOT 38

**ONE PACKAGE OF
THREE EMBRYOS**

**GUARANTEE ONE PREGNANCY
IF IMPLANTED BY A CERTIFIED
TECHNICIAN.**

**STORED EMBRYON VETERINARY SERVICES
CONSIGNED BY ROLLING MEADOWS
CATTLE
SHANE: 613-812-8974**

PE CE: 6.5 // BW: 3.3 // WW: 47 // YW: 79 // MILK: 25

- exciting combo here with the RAWF Supreme Champion Bull in Bruno and Roundtable's full sister
- the Proven Queen family is noted world wide for exceptional phenotype and J329 is the perfect example
- J329 is gorgeous uddered, big middled and very maternal. She herself was Reserve Jr Champ in Denver as a yearling so expect big things here



SHOW RING ROYALTY



BRUNO



PROVEN QUEEN AS A BRED

WHITESTONE ERICA 9110



J TRADEMARK 1037



PACKAGE OF FOUR EMBRYOS

**CONNEALY CRAFTSMAN X
WHITESTONE ERICA 9110**

PE CE: 7.0 // BW: 1.3 // WW: 68 //
YW: 120 // MILK: 31



PACKAGE OF THREE EMBRYOS

**J TRADEMARK 1037 X
WHITESTONE ERICA 9110**

PE CE: 9.0 // BW: 0.5 // WW: 69 //
YW: 124 // MILK: 26

- Whitestone Erica 9110 was the lead off \$25,000 cow of the '22 Whitestone Sale in Virginia
- Cutting edge genetics here with perfect EPD evaluations from sires not readily available in Canada
- Craftsman is the \$500,000 Resilient son that everyone is excited about and Trademark is also out of the popular Resilient bull who offers outcross to lost Canadians herds
- Note: within a years time Trademark offspring will be a premium as he is a lead bull used in the Coleman program

GUARANTEE TWO PREGNANCIES PER PACKAGE OF FOUR AND ONE PREGNANCY PER PACKAGE OF THREE IF IMPLANTED BY A CERTIFIED TECHNICIAN. STORED AT ALTA GENETICS. CONSIGNED BY LYNDEN MANOR FARM. GLEN: 416-526-5428.



CRAFTSMAN



DAM OF ERICA 9110

ELLINGSON BIG RIVER 0052 X GILLCO VELVET 1B



LOT 40

**TWO PACKAGES OF
THREE EMBRYOS**

**GUARANTEE ONE PREGNANCY PER
PACKAGE IF IMPLANTED BY A CERTIFIED
TECHNICIAN.**

**STORED AT DAVIS-RAIRDAN EMBRYO
TRANSPLANTS**

**CONSIGNED BY 719 CATTLE AND LARCH
GROVE FARM
IAN: 709-636-1270**

When you look at the beautifully designed Net Worth daughter involved in this mating, you will see a female with an impressive track record of progeny, as well as full and maternal sisters that are going on to write their own stories. 1B herself was a past Eastern Extravaganza high seller to Parkview Farms in Alberta, and has become a pillar in their program. Taking this perfectly constructed female and matching her with Big River; who will be making a lot of noise come this spring with his progeny at Peak Dot, is guaranteed to produce power and substance.



**AN UNBELIEVABLE
TRACK RECORD**



BIG RIVER



FULL SISTER TO VELVET 1B



DAUGHTER OF VELVET 1B

S A V MADAME PRIDE 0413



TWO PACKAGES OF THREE IVF EMBRYOS

**S A V ELATION 7899 X
S A V MADAME PRIDE 0413**

PE CE: 2.0 // BW: 2.3 // WW: 69 //
YW: 115 // MILK: 20



ONE PACKAGE OF FIVE I V F EMBRYOS

**S A V EMBLEM 8074 X
S A V MADAME PRIDE 0413**

PE CE: 1.5 // BW: 3.1 // WW: 71 //
YW: 125 // MILK: 26

Grandson of N Bar Emulation EXT, considered by many as the most influential Angus bull of the last 100 years, the foundational Emulation line is long revered for maternal characteristics, fertility and longevity. Paired with the greatest maternal cow line in the Angus breed, Elation is the best of all that came before him. He held the world record when he sold for \$800,000 during the 2018 Schaff Angus Valley sale. For buyers looking to increase frame size, growth and pay weight, as well as produce long-lasting daughters with high udder, teat and foot quality, this is your bull. Phenotypically attractive, extremely long-bodied, thick and muscular, Elation is athletic with a sound structure and docile temperament. Elation combines growth and maternal characteristics, two of the most sought-after traits in the beef industry, and gets it all done without compromising on economic performance along the way. 0413 is the greases proven daughter of 0075, the 17 year old maternal matriarch of SAV. She is a sixth generation proven embryo donor from pathfinder sire SAV Pioneer 7301. An incredible producer with extreme femininity and abundant milk. She has a weaning ratio of 106 on 5 calves. She is the dam of SAV Madame Pride 3256, the No 1 weaning and yearling co in the entire SAV herd. She comes from a long line of top producers. Her prolific dam, 0075, is the second-highest income generating cow in SAV history. She is also a maternal sister to SAV Registry, and Supercharger.

The popular second lead-off and second top-selling bull from the 2019 SAV sale. He is sired by SAV Raindance 6848, who is the number one semen sales sire at ST genetics and flush brother to SAV Rainfall 6846. Emblem combines a curve bending EPD profile with majestic herd bull presence, length of front, massive volume, expressive shape and breed-changing type, a force to be reckoned with in the Angus breed. His Pathfinder dam, SAV Emblynette 2369, is a herd-leader with unmatched phenotypic power and production ability. She is the #1 205-day weight and #1 marbling female of her calf crop. She has multiple daughters retained in the SAV herd and twelve progeny featured in past sales, including the top-selling female in the 2019 SAV sale and second top-selling female in the 2018 SAV Sale. Emblem has been chosen to carry on the namesake of the SAV Emblynette family, that was established in 1946. His prolific grand dam by Net Worth comes from four consecutive generations of Pathfinders, generating \$1.4 million in receipts on 100 direct progeny in past SAV sales and has 22 daughters retained in the SAV herd. 0413 is the greases proven daughter of 0075, the 17 year old maternal matriarch of SAV. She is a sixth generation proven embryo donor from pathfinder sire SAV Pioneer 7301. An incredible producer with extreme femininity and abundant milk. She has a weaning ratio of 106 on 5 calves. She is the dam of SAV Madame Pride 3256, the No 1 weaning and yearling co in the entire SAV herd. She comes from a long line of top producers. Her prolific dam, 0075, is the second-highest income generating cow in SAV history. She is also a maternal sister to SAV Registry, and Supercharger.

GUARANTEE ONE PREGNANCY PER PACKAGE OF THREE AND TWO PREGNANCIES PER PACKAGE OF FIVE IF IMPLANTED BY A CERTIFIED TECHNICIAN. STORED AT HAWKEYE BREEDERS. CONSIGNED BY GENETIC HEDGING SOLUTIONS. ISAIH: 515-371-5065

S A V ELATION 7899 X S A V BLACKCAP MAY 1051



LOT 42

TWO PACKAGES OF THREE IVF EMBRYOS

**GUARANTEE ONE PREGNANCY PER
PACKAGE IF IMPLANTED BY A CERTIFIED
TECHNICIAN.**

STORED AT HAWKEYE BREEDERS

CONSIGNED BY GENETIC HEDING
SOLUTIONS.

ISAIAH: 515-371-5065

PE CE: -2.0 // BW: 2.8 // WW: 71 // YW: 120 // MILK: 22

Grandson of N Bar Emulation EXT, considered by many as the most influential Angus bull of the last 100 years, the foundational Emulation line is long revered for maternal characteristics, fertility and longevity. Paired with the greatest maternal cow line in the Angus breed, Elation is the best of all that came before him. He held the world record when he sold for \$800,000 during the 2018 Schaff Angus Valley sale. For buyers looking to increase frame size, growth and pay weight, as well as produce long-lasting daughters with high udder, teat and foot quality, this is your bull. Phenotypically attractive, extremely long-bodied, thick and muscular, Elation is athletic with a sound structure and docile temperament. Elation combines growth and maternal characteristics, two of the most sought-after traits in the beef industry, and gets it all done without compromising on economic performance along the way. Dam is a full sister to the iconic Blackcap May 4136, the income leading female at SAV. Uniquely double bred to the blackcap may family, a family the leads the breed in in production of AI stud sires, including Resource, Renown, Recharge, Pedigree, Feedstock, Universal, Heritage, and Sensation. She has super phenotype with worlds of milk, outstanding pedigree and top epd traits of economic importance. Her first three natural progeny averaged \$22,666 in previous SAV sales.



ELATION

S A V RAINFALL 6846 X S A V EMBLYNETTE 0494



PE CE: 5.0 // BW: 1.0 // WW: 56 // YW: 103 // MILK: 26

Rainfall sires added length, soundness and unmistakable herd bull presence in his sons. His daughters are stunning in an elegant maternal package. He sets himself apart with his dominating hip and rear-leg structure with muscle shape and flawless phenotype. He brings calving ease, maternal strength, and performances together. With an impressive phenotype, pedigree and proven production record, 0494 comes from a prolific family of producers with fertility and longevity. A powerful daughter of Bismarck, she's the No. 1 YW and No. 3 WW female of her calf crop. Produced three top-selling progeny in past SAV sales, including SAV West Plains 2161, who was the top-selling Final Answer bull from the 2013 sale. Flush sister to SAV Bullet 0473 and SAV Bullion 0474 the two heaviest actual weaning bulls of the 2010 calf crop. Her Net Worth dam is the world-class producer SAV Emblynnette 7566, who ranks among the nine top income-producing cows at SAV. She produced 93 progeny for the SAV program thus far, averaging \$14,370 in past sales. Her granddam is 7261, a fourth-generation Pathfinder and the oldest living SAV cow at 20.5 years.



RAINFALL



A WORLD CLASS PRODUCER



LOT 43

**TWO PACKAGES OF
THREE IVF EMBRYOS**

**GUARANTEE ONE PREGNANCY PER
PACKAGE IF IMPLANTED BY A CERTIFIED
TECHNICIAN.**

**STORED AT HAWKEYE BREEDERS
CONSIGNED BY GENETIC HEDGING
SOLUTIONS.
ISAIAH: 515-371-5065**

WERNER LADY 3003



PACKAGE OF THREE EMBRYOS

**S A V RAINDANCE 6848 X
WERNER LADY 3003**

PE CE: 3.5 // BW: 3.0 // WW: 65 //
YW: 117 // MILK: 29

**GUARANTEE ONE PREGNANCY PER
PACKAGE IF IMPLANTED BY A CERTIFIED
TECHNICIAN.**

STORED ON FARM

**CONSIGNEE BY CLARKE FAMILY FARM
HUGH: 519-365-4026**



PACKAGE OF THREE EMBRYOS

**WERNER FLAT TOP 4136 X
WERNER LADY 3003**

PE CE: 7.0 // BW: 1.2 // WW: 60 //
YW: 111 // MILK: 33

We purchased 3003 from the Werner Angus dispersal and couldn't be more pleased with her. Her grand dam, Gambles Lady 634, was the top bred cow that sold in the 2008 Gambles Sale as lot 1 for \$45,000 and her dam sold in the Werner Angus dispersal for \$29,000. This powerful Prowler daughter has a strong presence, beautiful udder, great muscle, and moves out really well. Her AAA progeny record in 2017 had a WR 2@106, YR 2@ 103 and she, herself, posted an individual WR of 112, YR of 109 and UREA of 116.



PACKAGE OF THREE EMBRYOS

**DEER VALLEY OLD HICKORY X
WERNER LADY 3003**

PE CE: 4.0 // BW: 2.4 // WW: 65 //
YW: 112 // MILK: 31

DB ICONIC G95 X OSU EMPRESS 9164



FULL SISTER TO EMBRYOS

PE CE: 3.5 // BW: 1.7 // WW: 81 // YW: 146 // MILK: 25

- A full sibling (pictured) to these eggs was a high seller at this year Bases Loaded sale at OKC
- Numbers with added look from the famous Empress cow family at OSU
- Iconic progeny have been sale highlights every where you look south of the line
- The maternal granddam to this mating is the original 9164 cow who is now deceased



**SALE HIGHLIGHTS AT
EVERY TURN**



ICONIC



LOT 45

**ONE PACKAGE OF
THREE EMBRYOS**

**GUARANTEE ONE PREGNANCY
IF IMPLANTED BY A CERTIFIED
TECHNICIAN.**

STORED AT BOVITEQ

CONSIGNEE BY LA CONQUISTA
RANCHES

LUIS: 403-863-5802



LOT 46A

RONAN TEX 56A

**ANGUS ACRES TEX 16S X
RONAN BLACK IDA 57U**

ONE PACKAGE OF FIVE UNITS

CE: -4.0 // BW: 3.5 // WW: 36 //

YW: 57 // MILK: 18

STORED AT ALTA GENETICS
CONSIGNED BY LLB ANGUS
LEE: 403-740-9429



LOT 46B

N BAR EMULATION EXT

**EMULATION N BAR 5522 X
N BAR PRIMROSE 2424**

CE: 3.0 // BW: 1.3 // WW: 37 //

YW: 66 // MILK: 22

LOT 46C-1: FIVE UNITS | CONSIGNED BY GILCHRIST FARMS | BRAD: 519-440-6720 | STORED ON FARM.

LOT 24A-2: TWO PACKAGES OF FIVE UNITS | CONSIGNED BY LONE SPRUCE DEVELOPMENTS | 780-208-4888 | STORED AT BOW VALLEY GENETICS



LOT 46C

KG JUSTIFIED 3023

**CONNEALY JUDGMENT X
KG MISS MAGIC 1443**

THREE PACKAGES OF TEN UNITS

CE: 12.0 // BW: -2.0 // WW: 61 //

YW: 109 // MILK: 30

STORED AT ALTA GENETICS
CONSIGNED BY 719 CATTLE



LOT 46D

SITZ UPWARD 307R

**CONNEALY ONWARD X
SITZ HENRIETTA PRIDE 81M**

ONE PACKAGE OF FIVE UNITS

CE: 8.0 // BW: 2.3 // WW: 65 //

YW: 124 // MILK: 34

STORED ON FARM
CONSIGNED BY BRIAN COPELAND



LEAVING A LEGACY





KOUPAL KOZI 418
KOUPAL KOZI 22 X
KOUPAL EBONETTE 263

ONE PACKAGE OF FIVE UNITS
 CE: 8.0 // BW: 2.2 // WW: 79 //
 YW: 138 // MILK: 26

STORED ON FARM
 CONSIGNED BY GILCHRIST FARMS
 BRAD: 519-440-6720



5T POWER CHIP 4790
EXAR BLUE CHIP 1877B X
5T MISS WIX 8002

ONE PACKAGE OF TEN UNITS
 CE: 10.0 // BW: 0.9 // WW: 61 //
 YW: 96 // MILK: 19

STORED AT EASTGEN, BOVITEQ, AND ON FARM
 CONSIGNED BY GILCHRIST FARMS
 BRAD: 519-440-6720

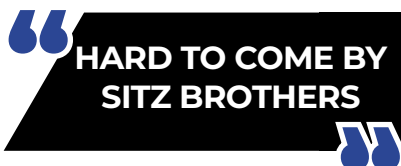


ONE PACKAGE OF FIVE UNITS

RED FINE LINE MULBERRY 26P

CE: 5.0 // BW: 2.2 // WW: 52 //
 YW: 93 // MILK: 25

STORED AT BOW VALLEY GENETICS
 CONSIGNED BY NU-HORIZON ANGUS
 KIERAN: 403-357-7648
 KODIE: 306-331-0384





LOT 48

**FIVE PACKAGES OF
FIVE UNITS**

CONLEY SOUTH POINT 8362

CE: 11.0 // BW: 0.1 // WW: 58 // YW: 90 // MILK: 28

South Point has established himself as a highly proven sire, combining breed leading calving ease and performance all in one package. His real-world qualities like foot structure, fluid movement, fertility, dimension, thickness and attention-grabbing presence are very evident in his calves. He works in the heifer pen giving you light birth calves that excel once they hit grass. Both sons and daughters are made with ideal skeletal structure and look. In the past year his progeny have been Champions and division winners throughout Canada and the US. A son, Wilbar Juncture 453 was recently named 2022 Canadian Angus Show Bull of the Year while another son was crowned Champion Bull at the renowned American National Junior Angus Show. Daughters in production have beautiful udders, weaned heavy calves and bred back early. Take advantage of your only chance to purchase semen on the International Champion Conley South Point 8362 in the 2023 breeding season.

STORED AT ALTA GENETICS. CAN QUALIFIED.

CONSIGNED BY WILBAR CATTLE CO.

BRYAN: 306-492-7504

TRACEY: 306-380-6772



LOT 49

**FOUR PACKAGES
OF FIVE UNITS**

PREMIER FUSION 809F

CE: 0.0 // BW: 2.8 // WW: 45 //

YW: 73 // MILK: 18

STORED AT BOW VALLEY GENETICS.
CAN AND USA QUALIFIED.

The last ever semen on selling Fusion. His progeny absolutely tore up Falls View this year. He calves easy, gives a big time look and transmit easy fleshing cattle

CONSIGNED BY 719 CATTLE



IRCC



SOUTH POINT DAUGHTER



SOUTH POINT SON



FUSION DAUGHTER



FUSION SON

S A V BESSIE HEIRESS 4196



LOT 50A

CHOICE OF 3 OR 5 EMBRYOS

**S A V TERRITORY 7225 X
S A V BESSIE HEIRESS 4196**

PE CE: -0.5 // BW: 3.8 // WW: 72 //
YW: 123 // MILK: 22



LOT 50B

CHOICE OF 3 OR 5 EMBRYOS

**S A V JESSE JAMES 0968 X
S A V BESSIE HEIRESS 4196**

PE CE: 3.0 // BW: 3.3 // WW: 59 //
YW: 102 // MILK: 24

S A V Bessie Heiress 4196 was the high selling female in 2015 at the Schaff Angus Valley sale commending \$53,000 US. Being a direct S A V Harvester 0338 daughter she is deep, broody and easy doing with an ideal udder and foot structure. The Bessie Heiress foundation cow family was established at S A V in 1946 and what a time-honored cow family it has created. We have retained 8 females. The two mating's on offer by S A V Territory 7225 and S A V Jessie James 0968, will create some of the most exciting offspring around. The ROI on these embryos looks very promising with the proven and exciting pedigrees created.. **GUARANTEE ONE PREGNANCY PER PACKAGE OF THREE, AND TWO PREGNANCIES PER PACKAGE OF 5 IF IMPLANTED BY A CERTIFIED TECHNICIAN. STORED AT PEAK VETERINARY. CAN AND USA EXPORTABLE. CONSIGNED BY SCHWAN ANGUS RANCH. TY: 306-774-4494. BRENDA: 306-741-2166**



TERRITORY



JESSE JAMES



DAM OF DONOR

S A V RENOVATION 6822 X S A V BLACKCAP MAY 8040



LOT 51

**ONE PACKAGE OF
THREE IVF EMBRYOS**

**GUARANTEE ONE PREGNANCY
IF IMPLANTED BY A CERTIFIED
TECHNICIAN.**

STORED AT TRANS OVA, IOWA
EMBRYOS ARE QUALIFIED FOR CAN AND USA

CONSIGNED BY HEATHCOTE ANGUS
WYATT: 780-645-1686

SAV Blackcap May 8040 is a true Angus breeding piece. Being a daughter out of Blackcap May 5530 the Cow with over 2 million in sales, shows the caliber of this donor. Very rarely will you see Schaffs picture 2 year old cows for their donor page and SAV Blackcap May 8040 made their list. Her son SAV Trust 1356 sold in the 2022 Bull Sale and she raised an Abundance Heifer this past summer that is being retained in the SAV herd. These embryos are sired by the great SAV Renovation 6822.



**THE CALIBER OF A TRUE ANGUS
BREEDING PIECE**



RENOVATION



\$22,000 3/4 SIBLING TO EMBRYOS

JL RUBY 5003



LOT 52A

PACKAGE OF THREE EMBRYOS

**MOHNEN GENERAL 548 X
JL RUBY 5003**

PE CE: 6.5 // BW: 1.5 // WW: 72 //
YW: 117 // MILK: 26



LOT 52B

PACKAGE OF THREE EMBRYOS

**DEER VALLEY GROWTH FUND X
JL RUBY 5003**

PE CE: 9.5 // BW: 0.9 // WW: 76 //
YW: 135 // MILK: 27

The JL Ruby cow is making a strong name for herself as a perfectly designed donor cow. This beauty is a strong boned, flat top cow with lots of hip and rib. We have flushed this cow multiple times and she produces more than ten embryos each time. Ruby has an impeccable udder with perfect teat placement and size. This female is the past high seller from the record setting 2020 Autumn Angus Classic sale. Ruby is a very docile cow and a treat to work with. We first flushed Ruby to Deer Valley Growth Fund and had great success. Growth Fund is arguably the best son of the very popular Basin Payweight. Growth Fund adds both maternal traits and performance to this flush. We were able to get our hands on some hard-to-find Mohnen General 548 semen and we thought there was no greater cow than Ruby 5003 to cross with it. Mohnen General progeny are becoming well known as sale toppers all around. General is proving to have great consistency in his calves producing thick, long females and strong boned, muscular bulls. Mohnen General is the past \$ 90,000 high selling bull of the 2019 Mohnen Bull Sale. **GUARANTEE ONE PREGNANCY PER PACKAGE OF THREE IF IMPLANTED BY A CERTIFIED TECHNICIAN. STORED AT DR. R.M. HOLTBY. CONSIGNED BY MAPLE LINE FARMS. TIM: 905-213-6518.**



GENERAL



GROWTH FUND



RUBY 5003 DAUGHTER

S A V MADAME PRIDE 6620



DAM OF MADAME PRIDE 6620



PACKAGE OF THREE EMBRYOS

**S A V RAINFALL 6846 X
S A V MADAME PRIDE 6620**

PE CE: 6.0 // BW: 1.1 // WW: 59 //
YW: 111 // MILK: 27



PACKAGE OF THREE EMBRYOS

**ELLINGSON HOMEGROWN 6035 X
S A V MADAME PRIDE 6620**

PE CE: 5.5 // BW: 1.5 // WW: 60 //
YW: 111 111 // MILK: 28

This female was a large investment for us, but well worth every penny. She is a phenomenal dam and checks all of the boxes for what creates the perfect cow. She is a direct daughter of SAV Madame Pride 0075, the second top income producing cow in SAV history with over \$5.3 million in direct progeny sales (as of 2019). With the maternal strengths, growth performance and worthy carcass data in this pedigree, she has made a large impact on the genetic potential of our herd.

GUARANTEE ONE PREGNANCY PER PACKAGE OF THREE IF IMPLANTED BY A CERTIFIED TECHNICIAN. STORED ON FARM. CONSIGNED BY CLARKE FAMILY FARM. HUGH: 519-365-4026



RAINFALL



HOMEGROWN

S A V MADAME PRIDE 8144



WERNER FLAT TOP 4136



PACKAGE OF THREE EMBRYOS

**S A V TERRITORY 7225 X
S A V MADAME PRIDE 8144**

PE CE: -2.0 // BW: 3.8 // WW: 79 //
YW: 139 // MILK: 22

**GUARANTEE ONE PREGNANCY PER
PACKAGE IF IMPLANTED BY A CERTIFIED
TECHNICIAN.**

STORED ON FARM.

**CONSIGNED BY CLARKE FAMILY FARM
HUGH: 519-365-4026**



PACKAGE OF THREE EMBRYOS

**WERNER FLAT TOP 4136 X
S A V MADAME PRIDE 8144**

PE CE: 5.0 // BW: 1.4 // WW: 67 //
YW: 127 // MILK: 31

S A V Madame Pride 8144 is one of the most stunning heifers we have seen and she was the #1 indexing heifer of the entire 2018 natural calf crop at Schaffs Angus Valley. She earned a 205-day weight of 812 lbs, putting her in the top 1% of the breed for weaning performance. In addition, she's a three-quarter sibling to S A V America 8018 - the 1.88 million dollar valuation, all-time top selling angus bull in history. We have very high hopes for this female and will have numerous calves off of her in the future, as she has produced extremely well for us via IVF.



PACKAGE OF THREE EMBRYOS

**BROOKING FIREBRAND 6068 X
S A V MADAME PRIDE 8144**

PE CE: -2.5 // BW: 4.0 // WW: 70 //
YW: 119 // MILK: 25



S A V MADAME PRIDE 2412



THE CANADIAN SEMEN RIGHTS

CONSIGNED BY MANDAN LAKE
SIMMENTAL
WADE: 701-794-3351

R PLUS ESTEVAN 2162K PG1396546 // LRPS 2162K // 08/02/2022

DRAKE POKER FACE 2X	R PLUS HAMMERTIME 5051C
CMS SOCHI 307A	MISS R PLUS 0017H
YR BLK PRIMADONNA 930W	MISS R PLUS 8199F
CE: 11.9 // BW: 1.5 // WW: 85.5 // YW: 132.8 // MILK: 25.8	

- Selling the Exclusive Canadian Semen Rights
- noted as "the man" of the recent R Plus Dispersal & high selling bull at \$70,000
- Double digit calving ease with big time WW & YW, Sochi cattle are proven
- Top 5% TI, top 10% API with large testicle development
- This bull stands so true on every corner & is as massive bodied as we've come across
- Entered for stud in Canada the end of February, we feel Estevan has a big future in the Simmental business while offering an outcross pedigree



MISS R PLUS 0017H



ESTEVAN PICTURED LAST FALL



LOT 56

**FIVE PACKAGES OF
TEN UNITS**

STORED AT ALTA GENETICS
SEMEN IS QUALIFIED FOR ???

CONSIGNED BY R PLUS SIMMENTALS,
BONCHUK FARMS, AND ROCKY
MEADOW RANCH
MARLIN: 306-421-2470

CE: 8.8 // BW: 2.0 // WW: 90.5 // YW: 146.0 // MILK: 16.7

- This bull was the talk of the R Plus dispersal
- In the last 3 years there's no other bull in the breed that has sired more higher dollared cattle then 5015
- He breeds so true with numbers, hair and excellent structure
- If embryo transfer is in your sights, have 5015 ready to use



THE TALK OF THE R+ DISPERSAL



**DAUGHTER / \$130,000 HIGH SELLER
TO DOUBLE BAR D & ASHWORTH**



**SON / R PLUS YUMA - \$150,000 HIGH
SELLER TO LABATTE AND OBERLE**

R PLUS UPPERCUT 6103D | MR TR HAMMER 308A ET X MISS R PLUS 1017Y



DAUGHTER / SOLD FOR \$30,000 TO
KT RANCHES



DAUGHTER / SOLD FOR \$15,000 TO
YARDLEY



SON / BLI/RNBW STILLWATER 31H



CE: 8.9 // BW: 2.4 // WW: 96.6 // YW: 151.5 // MILK: 19.3

- Outcross pedigree with hair
- Impressive EPd profile with astounding YW, top API and TI
- Extremely sound and marketable

**EXTREME
MARKETABILITY**



LOT 57A

**ONE PACKAGE OF
FOUR UNITS**

STORED AT BOVITEQ

CONSIGNED BY GILCHRIST FARMS
BRAD: 519-440-6720



LOT 57B

**THREE PACKAGES
OF TEN UNITS**

STORED AT BOW VALLEY GENETICS

CONSIGNED BY SIBL SIMMENTALS AND
CRM SIMMENTALS
BARCLAY: 780-305-6716



LOT 58

**THE RIGHT TO
FLUSH**

GUARANTEE SIX EMBRYOS WITH AN OPEN TOP.

CONSIGNED BY MANDAN LAKE
SIMMENTAL

WADE: 701-794-3351

CE: 8.3 // BW: 5.7 // WW: 83.3 // YW: 118.0 // MILK: 15.3

- This popular Relentless daughter is an absolute beast. From her remarkable hair, to her bold sprung body yet carrying it all so well in an angular dimension. Reg no. BPG1354333
- recently she commanded \$42,000 at the recent Fallsview sale as the top seller & has calved out a promising Hannibal baby
- The udder she has dropped looks like it's been drawn on, this female has all the credentials
- Open & ready to flush come March in Ontario to bull of your choice



**BOLD SPRUNG AND ANGULAR,
ALL THE CREDENTIALS**



MATERNAL SISTER / WEPPLER'S
HOT TOPIC



W/C RELENTLESS 32C

RF NO LIMITS 1112J X RF CERTAINLY FLIRTIN 956G



PE CE: 9.0 // BW: 4.6 // WW: 96.5 // YW: 150.1 // MILK: 23.3

One of the very best Flirt progeny to date, 956G was the highlight and high selling female at the Rose Bowl and Jenna/Flirt event of 2021. We are very pleased and excited to partner with Ranciers on the exciting, one of a kind female. The Flirt cow family needs no introduction as they are the right kind and continually rise to the top. Here is an excellent and rare opportunity to invest in these elite genetics.



**THE VERY BEST OF THE
FLIRTS TO DATE**



RF NO LIMITS 1112J



LOT 59

**ONE PACKAGE OF
THREE EMBRYOS**

**GUARANTEE ONE PREGNANCY
IF IMPLANTED BY A CERTIFIED
TECHNICIAN.**

STORED AT BOW VALLEY GENETICS
EMBRYOS ARE QUALIFIED FOR CAN

**CONSIGNED BY DOUBLE BAR D FARMS
KEN: 306-697-7204
LOGAN: 306-451-7229**

JSUL SOMETHING ABOUT MARY 8421 X MISS R PLUS 7171E



LOT 60

**ONE PACKAGE OF
THREE EMBRYOS**

**GUARANTEE ONE PREGNANCY
IF IMPLANTED BY A CERTIFIED
TECHNICIAN.**

STORED AT DAVIS-RAIRDAN EMBRYO TRANS-
PLANTS
EMBRYOS ARE QUALIFIED FOR CAN AND USA
CONSIGNED BY LEE/MARK SHOLOGAN
AND RUSYLVA CATTLE CO.
MARK: 780-699-5082
RILEY: 780-581-3013

PE CE: 12.0 // BW: 2.1 // WW: 74.0 // YW: 108.0 // MILK: 20.0

- Our pick of the Pokerface daughters in the historic R plus Dispersal, this female ties everything together in a baldy package
- Her son 2387K sold for \$12,000 as a new herd sire for the Yasieniuk Family plus a high selling daughter we feel 7171E is coming right into her prime
- This Pokerface daughter matched with the phenotype master SAM will create offspring with loads of potential & marketability



**PROUD, PRESENCE,
UDDER QUALITY**



JSUL SOMETHING ABOUT MARY 8421



\$10,000 DAUGHTER OF 7171E

KRJ DAKOTA OUTLAW G974 X GF EMERALD 301H



A chance to get in on a bull that is not offered in Canada and the sire of one of the hottest Simmental bulls in the US right now Next Level. This female was the \$30,000 selection from the Fallsview production sale as a heifer calf in 2020 and with her udder quality and how she has matured we are excited for what she has to offer as a donor



**NEVER BEFORE
OFFERED IN CANADA**



KRJ DAKOTA OUTLAW G974



NEXT LEVEL



LOT 61

**PREGNANT
RECIPIENT**

RECIP IS DUE TO CALVE FALL 2023

CONSIGNED BY GILCHRIST FARMS AND
ALTON CENTURY FARMS LTD.

BRAD: 519-440-6720

BLAKE: 519-440-6580



LOT 62

**SIX PACKAGES OF
FIVE UNITS**

STORED AT BOW VALLEY GENETICS.
SEMEN IS QUALIFIED FOR CAN, USA & AUS

CONSIGNED BY MAPLE LAKE STOCK
FARMS
GERRY: 204-741-0340

CE: 4.2 // BW: 5.7 // WW: 97.4 // YW: 157.3 // MILK: 25.9

- John Wayne is the bull that delivers results
- Long in length, wide as a truck & breeds so true
- His added bone, large scrotal & phenomenal temperament has really proved to click here at MLSF
- The only semen to sell for some time, this powerful bull is just starting to make his mark



DELIVERING RESULTS



DAUGHTER / FARL MS KEEPSAKE



SON

REMINGTON MISS KNIGHT 63U



LOT 63A

THE RIGHT TO IVF

REMINGTON MISS KNIGHT 63U

CE: 9.2 // BW: 1.8 // WW: 70.8 //
YW: 106.1 // MILK: 24.0



LOT 63B

TWO PACKAGES OF THREE IVF EMBRYOS

LLW CARD TRUE NORTH G71 X REMINGTON MISS KNIGHT 63U

PE CE: 11.6 // BW: 0.6 // WW: 72.1 //
YW: 101.9 // MILK: 23.5

Here is a great opportunity to buy mating by the Agribition 2021 champion bull True North. This mating has already been proven. With the full sister to this embryo sold to the Dudgeon Family for \$20,000 in this years Falls View sale. With the outstanding cow families on both sides of this mating the females will be outstanding as the GR 2K has already displayed. With True North calving easy and 63u performance the bulls will hit a home run. **Guarantee one pregnancy if implanted by a certified technician. Stored at Trans Ova and Davis- Rairdan Embryo Transplants.**



LOT 63C

PACKAGE OF THREE EMBRYOS

JBSF BERWICK 41F X REMINGTON MISS KNIGHT 63U

PE CE: 9.1 // BW: 3.1 // WW: 74.4 //
YW: 112.6 // MILK: 20.4

Here is a great opportunity to own a great mating that could raise the next great herd bull that will be a out cross. Sire by the \$109,000 Berwick and Lock N Load full Sister. This mating will combine the stile and mass and near perfect structural of Berwick. With the performance of 63U and that combination of the two-cow family that this mating will produce will make some outstanding females. Have a look at these one **Guarantee one pregnancy if implanted by a certified technician. Stored at Trans Ova and Davis- Rairdan Embryo Transplants.**

We are excited to be part of the 2023 February Freezes sale events. We would like to share a flush in one of the soundest Red blady 14-year-old donors in the breed today. Also being Lock N load's full sister does not hurt her. She is a breed changer in her own right. The heifer that is most recognised out of 63U is the yearling that went on to be the Grand champion female in the open Simmental show and was named Reserve over all breeds in the Junior show at the 2017 Royal Winter. She also produced two of the high selling heifer calves in the Fall View sale past two years. One which sold for \$18500 to Diamond M Cattle Company 2021. GR 2K to Dudgeon Family for \$20,000 and GR 14K to Ashworth farms for \$8500 In the 2022 sale. She is a standout when it comes to her flush record as well. She is one of Steve Yackley at Trans Ova favorite cow to IVF. She is not slowing down in her embryo production as she gets older the 3 times, we have flushed her this year. They have had an average of 35 #1 freezable embryos per flush. She is open and ready to be flushed. She is standing at Trans Ova in South Dakota. If you are looking to add some new genetic out of the US here is a great opportunity to do just that. **Guarantee 6 embryos with an open top. Flush to be done at Trans Ova, costs borne by the purchaser.**

CONSIGNED BY G R SIMMENTALS. GARY: 403-740-6823



LOT 64

**FIVE PACKAGES OF
FIVE UNITS**

SEMEN IS STORED ON FARM, CAN BE DELIV-
ERED TO BOW VALLEY GENETICS, REGINA

CONSIGNED BY RENDEZVOUS FARMS
DAVID: 204-447-7573

CE: 9.5 // BW: 4.8 // WW: 65.0 // YW: 97.4 // MILK: 41.8

- Never offered before , Charles is here !
- We have never had a bull create so much attention & use to our program
- Dark red, out of a great cow, I still remember the first day I saw Charles with Rachelle and we knew we needed to own him, which we did for \$75,000
- His progeny have been so widely accepted with his sons over the last 6 sales averaging in excess of \$10,000 per
- Use Charles for his colour, his docility & the way he can breed so consistently



**A NEVER BEFORE OFFERED
OPPORTUNITY - CHARLES**



AIA 191K



AIA 591K



AIA 609K

THESE CHARLES PROGENY SELL AT THE BULL SALE IN FEBRUARY



LOT 65A

**THREE PACKAGES
OF TEN UNITS**

VIRGINIA RAMSAY 739H

CE: 3.7 // BW: 4.3 // WW: 72.1 //

YW: 107.9 // MILK: 40.4

STORED AT BOW VALLEY GENETICS
SEMEN IS QUALIFIED FOR CAN AND USA

CONSIGNED BY DOUBLE BAR D FARMS

KEN: 306-697-7204

LOGAN: 306-451-7229



LOT 65B

**THREE PACKAGES
OF TEN UNITS**

ANCHOR D MOTOWN 865E

CE: 7.4 // BW: 4.6 // WW: 84.7 //

YW: 124.9 // MILK: 29.1

STORED AT BOW VALLEY GENETICS
SEMEN IS QUALIFIED FOR CAN AND USA

CONSIGNED BY DOUBLE BAR D FARMS

KEN: 306-697-7204

LOGAN: 306-451-7229



MOTOWN DAUGHTER



MOTOWN SON



LOT 65C

**THREE PACKAGES
OF TEN UNITS**

SVS CAPTAIN MORGAN 11Z

CE: 7.9 // BW: 5.4 // WW: 88.9 //

YW: 143.0 // MILK: 24.8

STORED AT ALTA GENETICS

SEMEN IS QUALIFIED FOR CAN, USA, AUS, BRA

CONSIGNEE BY DOUBLE BAR D FARMS

KEN: 306-697-7204

LOGAN: 306-451-7229



LOT 65D

**THREE PACKAGES
OF TEN UNITS**

W/C BANKROLL 811D

CE: 11.5 // BW: 1.5 // WW: 80.5 //

YW: 110.2 // MILK: 21.0

STORED AT ALTA GENETICS

SEMEN IS QUALIFIED FOR CAN

CONSIGNEE BY DOUBLE BAR D FARMS

KEN: 306-697-7204

LOGAN: 306-451-7229



CAPTAIN MORGAN SON



CAPTAIN MORGAN SON



BANKROLL DAUGHTER



LOT 65E

**THREE PACKAGES
OF TEN UNITS**

RUBYS TURNPIKE 771E

CE: 9.3 // BW: 3.8 // WW: 95.4 //

YW: 159.2 // MILK: 32.6

STORED AT ALTA GENETICS

SEMEN IS QUALIFIED FOR CAN AND USA

CONSIGNED BY DOUBLE BAR D FARMS

KEN: 306-697-7204

LOGAN: 306-451-7229



LOT 65F

**THREE PACKAGES
OF TEN UNITS**

KWA LAW MAKER 59C

CE: 7.4 // BW: 3.8 // WW: 84.4 //

YW: 140.4 // MILK: 34.3

STORED AT BOW VALLEY GENETICS

SEMEN IS QUALIFIED FOR CAN AND USA

CONSIGNED BY DOUBLE BAR D FARMS

KEN: 306-697-7204

LOGAN: 306-451-7229



TURNPIKE DAUGHTER



TURNPIKE DAUGHTER



LAW MAKER SON



LAW MAKER SON

GEFF COUNTY O X WADE DAISY 1D



FULL SISTER TO EMBRYOS



LOT 66

**ONE PACKAGE OF
THREE EMBRYOS**

**GUARANTEE ONE PREGNANCY
IF IMPLANTED BY A CERTIFIED
TECHNICIAN.**

STORED AT KIRKTON VET CLINIC

CONSIGNED BY CLARKE FAMILY FARM
HUGH: 519-365-4026

PE CE: 6.6 // BW: 2.7 // WW: 73.3 // YW: 109 // MILK: 21.2

- The leading AI sire County O just adds that look to all his calves!
- The Wade Daisy 1D cow has been a great producing cow here at Clarke Family Farm, with her last year's calf being out \$20,000 high selling female to Dudgeon Livestock, and went on to be the Grand Champion Simmental Heifer at the 2022 OYCS Double Feature Show in Ancaster this past Summer.



**DAM TO THE CHAMPION OYCS
SIMMENTAL CHAMPION**



COUNTY O



WADE DAISY 1D

LLW CARD TRUE NORTH G71 X STF ENCHANTED GIRL F6LB



PE CE: 10.8 // BW: 0.2 // WW: 70.3 // YW: 98.3 // MILK: 23.4

One of our no miss cows at Clarke family farms, this fancy black baldie cow raised a power house bull calf this year that will be out lead off bull calf. These embryos are possibly the next great one!



THE NEXT GREAT ONE



TRUE NORTH



LOT 67

ONE PACKAGE OF THREE EMBRYOS

**GUARANTEE ONE PREGNANCY
IF IMPLANTED BY A CERTIFIED
TECHNICIAN.**

STORED AT KIRKTON VET CLINIC.

CONSIGNEE BY CLARKE FAMILY FARM
HUGH: 519-365-4026

WS EPIC E152 X STF TRENDY BT26



LOT 68

**ONE PACKAGE OF THREE
OR FIVE IVF EMBRYOS**

**GUARANTEE ONE PREGNANCY FOR 3,
TWO PREGNACIES FOR 5, IF IMPLANTED
BY A CERTIFIED TECHNICIAN.**

STORED AT BOVITEQ

CONSIGNED BY EARLEY LIVESTOCK
KADE: 519-709-7839

PE CE: 14.0 // BW: 0.3 // WW: 78.5 // YW: 125.6 // MILK: 20.8

A daughter of the well known STF Onyx 451W. Trendy is a full sister to Royal Affair. This exceptional red donor cow is extremely big ribbed, high capacity female that is super cool and well designed from every angle. Excellent structured and awesome foot quality. Mated to WS Epic E152 the exceptional red bull on paper from Semex that has created his own path!



**EXCEPTIONALLY DESIGNED FULL
SISTER TO ROYAL AFFAIR**



WS EPIC E152

LLW CARD TRUE NORTH G71 X GF EMERALD 301E

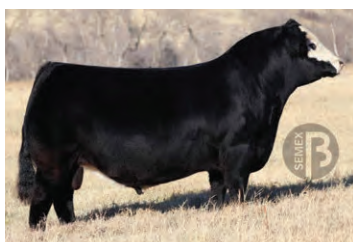


PE CE: 13.9 // BW: -0.6 // WW: 67.1 // YW: 92.3 // MILK: 20.7

GF Emerald 301E is one of the great ones making a name for herself year after year. A direct daughter 301H sold for \$30,000 as a calf to Alton Century Farms and in 2022 we have decided to retain all of her ET progeny as we plan to bring out some impressive breds for the fall. The sire of these embryos was the talk of the barns in 2021 and his progeny are already starting to leave their mark on the industry.



**FORGING HER PATH TO A
HOUSEHOLD NAME**



LLW CARD TRUE NORTH G71



LOT 69

**ONE PACKAGE OF
THREE EMBRYOS**

**GUARANTEE ONE PREGNANCY
IF IMPLANTED BY A CERTIFIED
TECHNICIAN.**

STORED AT AT BOVITEQ
EMBRYOS ARE EXPORTABLE

CONSIGNEE BY GILCHRIST FARMS
BRAD: 519-440-6720



LOT 70A

**THREE PACKAGES
OF TEN UNITS**

STORED AT DMV GENETIQ
SEMEN IS QUALIFIED FOR CAN, USA, AND AUS

CONSIGNED BY LOBSTER POINT
PROPERTIES AND JT LIVESTOCK LTD.

JAY: 902-277-1102
JOHN: 403-741-5629



LOT 70B

**FOUR PACKAGES OF FIVE
SEXED FEMALE UNITS**

CE: 5.1 // BW: 2.8 // WW: 67.5 // YW: 91.6 // MILK: 20.2
Red Bull is such a unique individual that gives a different twist of pedigree for red Simmental breeders with all the extras Homo Polled, very stout, rugged boned, big footed, extremely hairy, athletic in his motion, and good natured. His calves are coming with moderate birth weights and angus like aggressiveness, he is not a heifer bull because they come a little rugged and extra hairy, but I feel the sexed heifer semen would work for heifers. His calves are very exciting and we would like to share his genetics, Red Bull is definitely worth trying.



SON



**A UNIQUE
INDIVIDUAL**





LOT 71

**ONE PACKAGE OF
THREE UNITS**

WHEATLAND BULL 680S

CE: 2.9 // BW: 5.7 // WW: 74.8 //

YW: 123.6 // MILK: 21.8

STORED ON FARM

CONSIGNED BY BARLEE SIMMENTALS
JERRY: 613-203-3217



LOT 72

**ONE PACKAGE OF
FIVE UNITS**

CNS DREAM ON L186

CE: 15.3 // BW: 0.4 // WW: 71.3 //

YW: 94.4 // MILK: 14.7

STORED ON FARM

CONSIGNED BY BARLEE SIMMENTALS
JERRY: 613-203-3217





LOT 73

**ONE PACKAGE OF
FIVE UNITS**

VCL LKC EQUITY 608D

CE: 12.5 // BW: 1.1 // WW: 71.1 //

YW: 88.4 // MILK: 22.6

STORED ON FARM

**CONSIGNED BY BARLEE SIMMENTALS
JERRY: 613-203-3217**



LOT 74

**TWO PACKAGES OF
FIVE UNITS**

SPRINGCREEK DENALI 21E

CE: 3.0 // BW: 4.4 // WW: 88.9 //

YW: 135.7 // MILK: 23.8

STORED ON FARM

**CONSIGNED BY BARLEE SIMMENTALS
JERRY: 613-203-3217**





LOT 75

**ONE PACKAGE OF
THREE UNITS**

NCB COBRA 47Y

CE: 11.0 // BW: 1.7 // WW: 82.8 //

YW: 121.3 // MILK: 24.1

STORED ON FARM

CONSIGNED BY HARBECK CATTLE
COMPANY

SAM: 519-375-6443



LOT 76

**ONE PACKAGE OF
THREE UNITS**

MR HOC BROKER

CE: 4.2 // BW: 4.5 // WW: 77.2 //

YW: 108.1 // MILK: 18.0

SEMEN IS STORED ON FARM

CONSIGNED BY HARBECK CATTLE
COMPANY

SAM: 519-375-6443

M&M OUTSIDER 4003 PLD X MISS PRAIRIE COVE 110J



LOT 77

**ONE PACKAGE OF
THREE SEXED FEMALE
IVF EMBRYOS**

**GUARANTEE ONE PREGNANCY
IF IMPLANTED BY A CERTIFIED
TECHNICIAN.**

**STORED AT BOW VALLEY GENETICS
CONSIGNED BY JON-ERN FARMS LTD.,
NICKI ROSS, AND PRAIRIE COVE
CHAROLAIS
TYLER: 403-501-0660**

PE CE: 8.7 // BW: -1.8 // WW: 39 // YW: 72 // MILK: 21

Simply put one of the very best females to call PCC home, we couldn't be happier to have Jon Ern Farms and Nicki Ross partner on this beautiful Berkly daughter with us. We have big plans for Miss Prairie Cove 110J in the future. First step had to be to flush her to the immortal M&M Outsider 4003 PLD and we decided to share a handful with our fellow Charolais Enthusiasts.



THE BEST TO CALL PCC HOME



OUTSIDER



CE: 10.7 // BW: -2.5 // WW: 40 // YW: 69 // MILK: 22

No bull has written his history for combining calving ease, breed leading performance, and producing show ring phenoms as beautifully as Outsider. His famous dam M&M Ms Carbine 1567 PLD excels in production, with over 110 registered progeny to date. Outsider's credentials speak for themselves.



THE SIRE OF CHAMPIONS



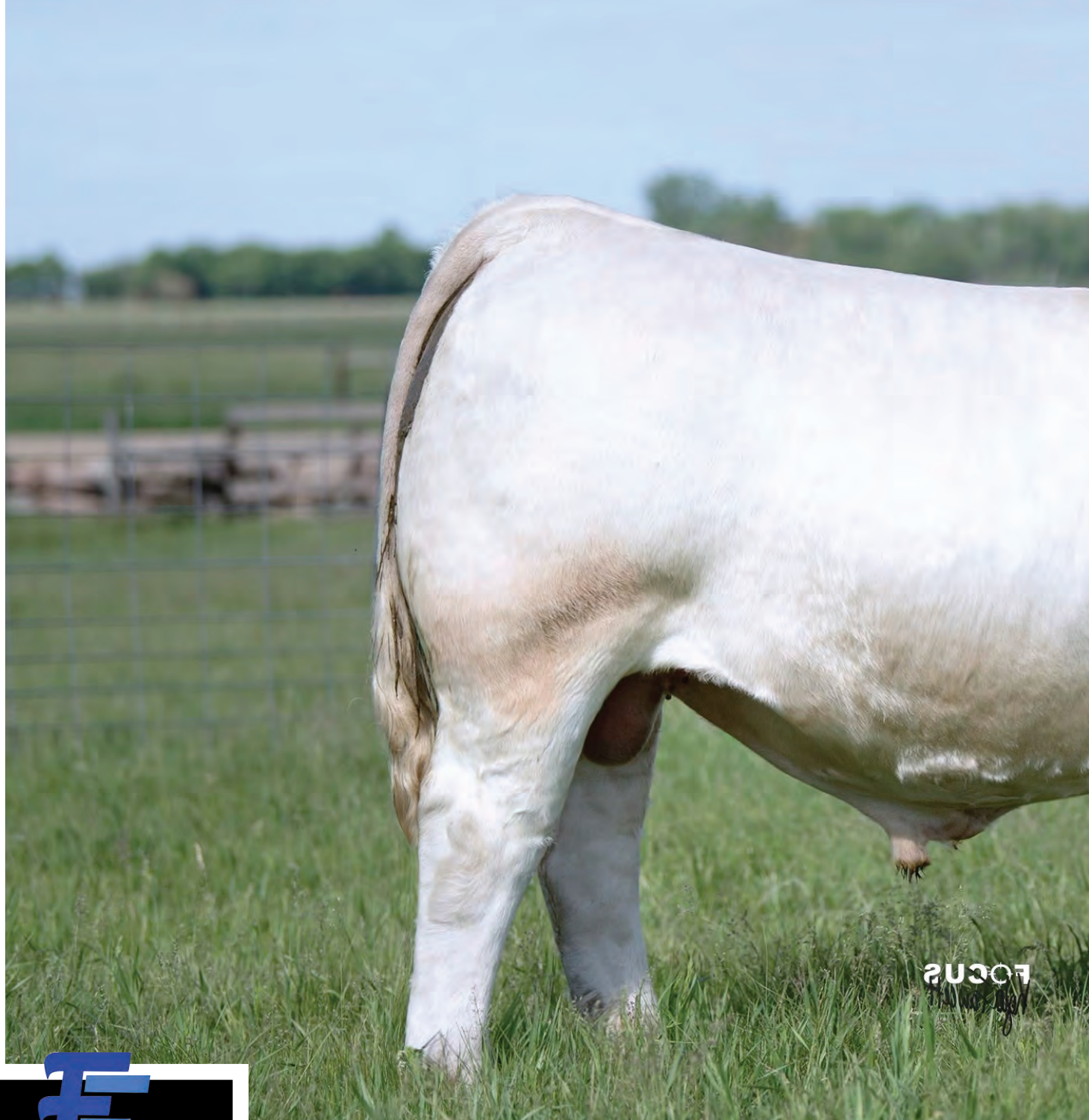
OUTSIDER DAUGHTER



LOT 78

**ONE PACKAGE OF
THREE UNITS**

STORED AT ALTA GENETICS
CONSIGNED BY PRAIRIE COVE
CHAROLAIS
TYLER: 403-501-0660



20307
WCR



FIFTEEN PACKAGES OF TEN UNITS

STORED AT ALTA GENETICS

CONSIGNED BY PRAIRIE COVE
CHAROLAIS, DANG CHAROLAIS,
SUGARLOAF CHAROLAIS, AND JG
LARSON LIVESTOCK
TYLER: 403-501-0660

WCR BOLD MOVE 168 P M959157 // 168 // 03/02/2021

WC BENELLI 2134 P ET | WCR REMIX 606 ETP
WC PLATINUM 8558 P | **WCR MS REMIX 9250 P**
WC MAID 5651 P ET | WCR MS PRIME CUT 640 P
CE: 5.5 // BW: -1.2 // WW: 85 // YW: 149 // MILK: 25

WCR Bold Move 168 P was just the sale featured Herd bull topping the USA Charolais National sale in Denver Colorado. Bold Move offers excellent phenotype combined with an absolute star-studded genetic EPD profile. He also comes from one of the most prolific cow families at the WCR program, a large Charolais operation that is international known and respected. Bold Move ranks in the Top 35% in 9 different traits, including the Top 1% WW, Top 1% YW, Top 1% TSI. Bold Move is so unique as he has the extra good looks combined with a staggering EPD profile. A pedigree that is an outcross to many in the entire Charolais breed as well as a negative -1.6 BW epd and 80lb actual birthweight. Bold Move can end your search for something different to use in your AI program on your heifer pen for 2023.



WCR MS REMIX 9250 P



TEN PACKAGES OF TEN UNITS

SEMEN IS STORED AT WESTERN SIRE SERVICES,
WE WILL BEAR THE COST OF SHIPPING TO
ALTA.

CONSIGNED BY THE KEYSTONE GROUP
COLT KEFFER: 765-376-8784

RBM KEYSTONE H41 M943428 // H41 // 01/01/2020

LT RIO BRAVO 3181 P	EC BIG DEAL 979 PLD
LT RUSHMORE 8060 PLD	RBM JASMINE F251
LT BRENDA'S EASE 3055PLD	EC JASMINE 561 PLD
CE: 2.8 // BW: 0.8 // WW: 74 // YW: 127 // MILK: 34	

RBM Keystone H41 sold in the spring of 2021 for \$34,000 to a partnership between Brent Charolais and Legacy Ranch Charolais. He is quickly becoming one of the most used sires in the breed due to his tandem of performance and carcass merit coupled with an elite phenotype. His EPD tabulation is rivaled by few boasting top 4% WW, 8% YW, 4% MILK, 1% MTL, 5% SC, 35% UDDER, 9% CW, 30% REA, 2% MARB & 10% TSI. This all with a 76-pound BW to ratio 93, and a 115 WWR, 112 YWR and 108 IMFR. His first crop of calves hit the ground in the fall and reports indicate a short gestation, lively vigor, and quick growth, stamped with added eye appeal. His dam, RBM Jasmine F251, is an exciting young donor that sold for a \$37,000 valuation in the 43rd National Charolais Sale in Denver. We strongly believe that Keystone will outlast many sires simply because he is able to add real world performance, phenotypic quality, and impeccable structure. This will be the only semen offered in Canada in 2023.



RBM JASMINE F251



LOT 81

**FIVE PACKAGES OF
TEN UNITS**

STORED AT ALTA GENETICS

CONSIGNED BY LINDSKOV'S LT RANCH
AND WILD INDIAN ACRES
BRYCE: 605-850-3887

CE: 11.3 // BW: -2.7 // WW: 53 // YW: 98 // MILK: 21

Atlas brings an impressive data set to world-class conformation and disposition. He was the lead-off bull for the 40th Annual Lindskov-Thiel Bull Sale and stands on excellent feet and legs. His beautiful dam has Dam of Distinction honors in her sights. Easy to follow and good on arrival, let Atlas help map your future.



MAP YOUR FUTURE



MONTE CARLO AND RESOURCE GENETICS



First Lady
Classic
PRESENTED BY MERCK
Animal Health



LOT 82A

PACKAGE OF THREE EMBRYOS

**CCC WC REDEMPTION 7143 PLD ET X
DF MS MONTE CARLO 043H**

PE CE: 7.6 // BW: -0.8 // WW: 44 //
YW: 82 // MILK: 24



LOT 82B

PACKAGE OF FIVE UNITS

CCC WC RESOURCE 417 P

PE CE: 7.9 // BW: -1.3 // WW: 47 //
YW: 85 // MILK: 30

Here is an exciting opportunity to purchase embryos from a full sister in blood to the 2021 supreme champion female at Agribition. Monte Carlo built quite a reputation for herself that very year by being Champion female at multiple major shows through Ontario and topping it all off by winning the First Lady Classic at Agribition. A pedigree stacked top and bottom side when you consider the huge impact that Redemption is starting to have on the breed and the even greater impact this cow family is having north and south of the border. **GUARANTEE ONE PREGNANCY PER PACKAGE OF THREE IF IMPLANTED BY A CERTIFIED TECHNICIAN. EMBRYOS ARE STORED AT HEARTLAND VETERINARY SERVICES. SEMEN IS STORED ON FARM. CONSIGNED BY MAPLELM CATTLE CO. GREG: 519-291-8092**



FULL SISTER IN BLOOD TO MONTE CARLO



REDEMPTION



RESOURCE

PZC LILY 5013 ET



LOT 83A

PACKAGE OF FIVE EMBRYOS WINN MANS LANZA 610S X PZC LILY 5013 ET

PE CE: 7.8 // BW: -1.1 // WW: 36 //
YW: 89 // MILK: 33



LOT 83B

PACKAGE OF THREE EMBRYOS PCC BOURBON 118J X PZC LILY 5013 ET

PE CE: 8.9 // BW: -2.2 // WW: 34 //
YW: 67 // MILK: 29



LOT 83C

PACKAGE OF THREE EMBRYOS ONE EMBRYO M&M OUTSIDER 4003 PLD X PZC LILY 5013 ET

PE CE: 9.4 // BW: -2.3 // WW: 34 //
YW: 67 // MILK: 29

TWO EMBRYOS PCC BREWITT 929G X PZC LILY 5013 ET

PE CE: 3.8 // BW: 1.3 // WW: 39 // YW: 78 // MILK: 30

Two time back to back Supreme Champion female and the original World Champion. Lily continues her legacy building offspring that just flat out work and win banners and excel in production. Her latest ET daughter being a high selling female at \$25,000 in the Miss Prairie Cove female sale 2022 to the Dudgeons and Nicki Ross, we are excited about this females future with those folks. The matings being offered are proven and also a Seton brand new eggs from our main man PCC Bourbon 118J. Take advantage of this opportunity to make your own winning Lily! **GUARANTEE ONE PREGNANCY PER PACKAGE OF THREE IF IMPLANTED BY A CERTIFIED TECHNICIAN. STORED AT DAVIS-RAIRDAN EMBRYO TRANSPLANTS. CONSIGNED BY PRAIRIE COVE CHAROLAIS. TYLER: 403-501-0660**

PRAIRIE COVE MISS 309A



PACKAGE OF TWO EMBRYOS
M & M OUTSIDER 4003 PLD X
PRAIRIE COVE MISS 309A
 PE CE: 7.8 // BW: -1.0 // WW: 40 //
 YW: 68 // MILK: 24



PACKAGE OF THREE EMBRYOS
PCC KENTUCKY RAIN 836F X
PRAIRIE COVE MISS 309A
 PE CE: 6.0 // BW: 0.1 // WW: 40 //
 YW: 71 // MILK: 23



PACKAGE OF THREE EMBRYOS
TR DSUL 100 PROOF B24 ET X
PRAIRIE COVE MISS 309A
 PE CE: 3.3 // BW: 1.6 // WW: 42 //
 YW: 73 // MILK: 25



PACKAGE OF THREE EMBRYOS
HVA FIREBALL 662F X
PRAIRIE COVE MISS 309A
 PE CE: 5.9 // BW: 0.7 // WW: 49 //
 YW: 88 // MILK: 22

Safe to say 309A is the epitome of consistency. You want bulls that top your sale you want females that are at the top of your replacement pen or the type that lead off sales in the fall. Miss Prairie Cove 309A can do it all. The greatest HTA Vegas daughter to ever live bar none. The list of cattle in seedstock operations is incredibly long and impressive. Great chance to dig in on the most consistent Donor at PCC and Cays. **GUARANTEE ONE PREGNANCY PER PACKAGE OF THREE IF IMPLANTED BY A CERTIFIED TECHNICIAN. STORED AT DAVIS-RAIRDAN EMBRYO TRANSPLANTS. CONSIGNED BY PRAIRIE COVE CHAROLAIS. TYLER: 403-501-0660**



LOT 85A

**FIVE PACKAGES OF
TEN UNITS**

HIGH BLUFF CASANOVA 13C

CE: 4.9 // BW: 1.2 // WW: 46 //

YW: 86 // MILK: 21

STORED AT ALTA GENETICS
SEMEN IS QUALIFIED FOR CAN

**CONSIGNED BY HIGH BLUFF STOCK
FARMS**

CARMAN: 204-773-6448



LOT 85B

**FIVE PACKAGES OF
TEN UNITS**

SCX TRIUMPH 50B

CE: 2.0 // BW: 2.4 // WW: 66 //

YW: 130 // MILK: 9

STORED AT BOW VALLEY GENETICS AND
GENEX, BILLINGS
SEMEN IS QUALIFIED FOR CAN AND USA.

**CONSIGNED BY HIGH BLUFF STOCK
FARMS**

CARMAN: 204-773-6448



CASANOVA SON



CASANOVA DAUGHTER



TRIUMPH SIRE



TRIUMPH SON



LOT 86A

FIVE PACKAGE OF TEN UNITS

HRJ CROWD FAVOURITE 515C

CE: 1.3 // BW: 3.7 // WW: 45 //

YW: 98 // MILK: 21

STORED AT ALTA GENETICS. CAN AND USA QUALIFIED

Crowd Favourite proves to be a great tool to have in the tank. He continues to sire the right type; big middled, heavy haired and strong footed. His daughters have become proven cows in many herds. Maternally backed and performance oriented sire. Homo Polled.

CONSIGNED BY JOHNSON CHAROLAIS
STEPHEN: 780-305-9196



LOT 86B

FIVE PACKAGE OF TEN UNITS

HRJ FAN FAVOURITE 804F

CE: 0.3 // BW: 3.5 // WW: 72 //

YW: 130 // MILK: 20

HOMO POLLED

STORED AT ALTA GENETICS
SEMEN IS QUALIFIED FOR CAN AND USA

CONSIGNED BY JOHNSON CHAROLAIS
STEPHEN: 780-305-9196



CROWD FAVOURITE DAUGHTER



CROWD FAVOURITE DAUGHTER



FAN FAVOURITE SON



FAN FAVOURITE DAUGHTER

SVY TRUST 6H X ECHO SPRINGS WORTHWHILE 60C



LOT 87

**TWO PACKAGES OF
THREE EMBRYOS**

**GUARANTEE ONE PREGNANCY PER
PACKAGE IF IMPLANTED BY A CERTIFIED
TECHNICIAN.**

STORED ON FARM

CONSIGNED BY BRISHLANTON FARMS
BRAD: 519-395-3634

PE CE: 1.7 // BW: 2.9 // WW: 44 // YW: 81 // MILK: 23

Here is a unique opportunity on the 2017 and 2020 RAWF Grand Champion Charolais Female. These embryos are produced by Echo Springs Worthwhile 60C and sired by the \$123,000 SVY Trust. 60C was purchased from the reputable Echo Springs operation and has since become the cornerstone of our growing herd. It is with great excitement that we offer these embryos. SVY Trust is the bull creating as much excitement in the Charolais breed as any in recent history. Combining the 60C and Starstruck cow family is an untapped potential. The genetic prospect of this outcross mating is a great opportunity to be ahead of the curve.

AHEAD OF THE CURVE



TRUST



LOT 88

**ONE PACKAGE OF
TWO UNITS**

CEDARDALE ZEAL 125Z

CE: 4.4 // BW: -1.3 // WW: 49 // YW: 80 //

MILK: 18

STORED ON FARM

CONSIGNED BY IRIS CREEK FARMS

BRUCE: 519-953-8405

HEATHER: 519-389-7745

BRYCE: 519-389-1571



WHILE THE SALE IS CONDUCTED
ONLINE, WE AT T BAR C ARE ALWAYS
HERE TO ASSIST YOU IN MAKING YOUR
SELECTIONS, AS WELL AS HANDLE YOUR
ORDERS IN A CONFIDENTIAL MANNER.
PLEASE BE IN TOUCH WITH ANY OF OUR
SALE STAFF:

CHRIS POLEY 306-220-5006

BEN WRIGHT 519-374-3335

SHANE MICHELSON 403-363-9973

LEVI RIMKE 204-851-4515





LOT 89

TEN PACKAGES OF TEN UNITS

STORED AT ALTA GENETICS

CONSIGNEE BY MOHICAN WEST
POLLED HEREFORDS
TERRY: 406-670-8529

INNISFAIL WHR X651/723 4013 ET P C03054441 // IF 4013 // 10/09/2014

EFBEEF FOREMOST U208	EF F745 FRANK P230
EFBEEF TFL U208 TESTED X651 ET	INNISFAIL P230 T723
EFBEEF P606 MABEL R415	INNISFAIL 235 R501 ET

CE: 0.6 // BW: 4.5 // WW: 82.6 // YW: 131.7 // MILK: 24.7 // FAT: 0.088 // REA: 0.50 // MARB: 0.72 // CARC WT: 84.3

- What better way is there to start of the Hereford section of this elite sale
- 4013 was one of the top sires to surface during the 2022 Fall sale season, siring many high seller across the nation
- This is a great outcross sire that will consistently add superior growth and carcass traits, while adding eye appeal



\$20,000 DAUGHTER



\$22,000 DAUGHTER



\$31,000 SON

TH 183F DIGNIFIED 179J | TH MASTERPLAN 183F X TH 372C 456B GEMINI 51E



CE: 3.5 // BW: 0.8 // WW: 64 // YW: 102 // MILK: 26

Dignified is dark red, short-marked, and is the next leading herd sire out of the Topp Hereford program. Ranks in the top for BW, WW, YW and REA. Dignified also had a whopping WW ratio of 116. Dignified is safe to use on heifers. The Gemini 51E dam is also the dam to the 2021 high selling bull, Crown Royal 182H for the Topp's. IF you want to be on the cutting edge of genetic advancement in Canada, get yourself some Dignified 179J.



LOT 90

**FIVE PACKAGES OF
FIVE UNITS**

STORED AT BOW VALLEY GENETICS AND
CUSTOM GENETIC SOLUTIONS.
SEMEN IS CAN AND USA QUALIFIED.

CONSIGNEE BY BLAIR'S.AG CATTLE
COMPANY
KEVIN: 306-365-7922

**CUTTING EDGE
ADVANCEMENT**



MATERNAL BROTHER

GHC C5 ATTENTION 155E | SHF CANNON Z210 C95 X GHC C5 MISS DUCHESS 58C



CE: 3.2 // BW: 2.1 // WW: 58.8 // YW: 88.7 // MILK: 29.4

The last of the Attention semen to sell. The sire of the 2021 Agribition Grand Champion Horned Hereford Bull for Kurtis Reid, and the 2022 President's Classic Champion Hereford Bull for Glenlees, his show ring success is unmatched. His maternal sister recently topped the 2022 CWA National Hereford sale for Airiess Acres, where the first Attention bull to sell at auction fetched \$16,000.



A DOMINANT PRESENCE



DAM



MATERNAL SISTER, SOLD FOR
\$25,000



LOT 91

FOUR PACKAGES
OF TEN UNITS

SEMEN IS STORED AT BOW VALLEY GENETICS
CONSIGNED BY CRITTENDEN LAND AND
CATTLE AND THE CLIFFS FARM
HOWARD: 306-963-7880
KURTIS: 306-220-2226



LOT 92

**THREE PACKAGES
OF TEN UNITS**

STORED AT BOW VALLEY GENETICS

CONSIGNED BY HAROLDSON'S POLLED
HEREFORDS AND MJT CATTLE CO.
CHAD: 306-577-1256
KURT: 780-619-2224

CE: -1.2 // BW: 5.3 // WW: 55.8 // YW: 97.2 // MILK: 30.0

Royal has proven himself as a great breeding tool with progeny all across the continent surfacing to the top. Dark red, sound to the ground, with loaded muscle expression in an attractive package. His daughters now in production have tremendous udder quality and provide extra value with Royal's mother 13B being one of the top cows in the Haroldson herd.



**A PROVEN
BREEDING TOOL**



DAUGHTER



DAUGHTER



DAUGHTER



CE: 5.6 // BW: 2.6 // WW: 67 // YW: 110 // MILK: 18

TH Crown Royal 182H brings a fresh set of genetics to breeders in Canada. 182H has a balanced set of EPD's with a dam that is one of the best uddered cows at Topp Herefords. He is soggy in make up and packed with red meat and muscle. Crown Royal is goggle eyed, short marked and dark red. He was the second high seller at Topp's 2021 sale at \$110,000.00



A FRESH SET OF GENETICS



DAM



LOT 93

**FIVE PACKAGES OF
FIVE UNITS**

STORED AT BOW VALLEY GENETICS

CONSIGNED BY WOODEN SHOE FARMS,
A.N.L, BROOKS FARMS, ROSELAWN
FARMS, GOLDEN OAK LIVESTOCK AND
TOPP HEREFORDS
KARL: 306-487-7794

HAROLDSON'S JVJ ROYAL 24E X ICF TANSY 100W 204B



LOT 94

**ONE PACKAGE OF
THREE SEXED FEMALE
IVF EMBRYOS**

**GUARANTEE ONE PREGNANCY
IF IMPLANTED BY A CERTIFIED
TECHNICIAN.**

STORED AT HEARTLAND VETERINARY SERVICES

CONSIGNED BY IRIS CREEK FARMS

BRUCE: 519-953-8405

HEATHER: 519-389-7745

BRYCE: 519-389-1571

PE CE: 4.6 // BW: 3.3 // WW: 55.6 // YW: 91.5 // MILK: 26.1

These embryos are packed full of genetic potential. Their sire, "Royal", is no stranger to the Hereford breed and is leaving an impressive set of females. They are attractive, deep bodied and have beautiful udders. The dam, ICF 204B, is a powerful cow. She packs eye appeal with performance and consistency. A brother was used in our herd and then sold to His and Hers Herefords, her maternal sister sold last year to Glenlees in Saskatchewan and a heifer calf sold in 2021 to Sandy Ridge Cattle Company in Walkerton. We are confident these embryos will make great females!



**PACKED FULL
OF POTENTIAL**



DAUGHTER OF TANSY AND PIONEER

TH 403A 475Z PIONEER 358C ET | TH 89T 755T STOCKMAN 475Z X TH 71U 17Y RITA 403A



CE: -4.0 // BW: 6.4 // WW: 83.2 // YW: 142.9 // MILK: 28.1

Pioneer is a predictable and complete breeding tool. He stamps his calves dark red and full of eye appeal. This bull is a trait leader in WW, YW, TM, scrotal, cow weight and rib eye area.



**A PREDICTABLE
TRAIT LEADER**



LOT 95

**TWO PACKAGES OF
FIVE UNITS**

SEMEN IS STORED ON FARM.

CONSIGNED BY IRIS CREEK FARMS

BRUCE: 519-953-8405

HEATHER: 519-389-7745

BRYCE: 519-389-1571

FF LOT 96

ONE PACKAGE OF THREE CONVENTIONAL EMBRYOS

**BAR STAR FRESH PRINCE 018 ET X
BLAIR-ATHOL 97B CHICKADEE 131D**

PE CE: 2.0 // BW: 3.1 // WW: 61.4 //

YW: 95.3 // MILK: 95.3

**GUARANTEE ONE PREGNANCY
IF IMPLANTED BY A CERTIFIED
TECHNICIAN.**

EMBRYOS ARE STORED AT EMBRYO GENETICS
LTD. EXPORTABLE AND UK QUALIFIED.

**CONSIGNED BY BLAIR-ATHOL POLLED
HEREFORDS
JEFF: 306-577-1375**



CHICKADEE 131D



DAUGHTER OF 122G

Exciting opportunity to purchase some of the first Fresh Prince embryos available in Canada. Fresh Prince was the high selling Hereford bull at the inaugural Cattlemen's Classic show in Oklahoma back in 2021. The Chickadee donor is a "never miss" type of cow. Most notably, the dam of Applause 122G our High selling female in 2020 and Agribition Reserve Champion Female.



FF LOT 97

ONE PACKAGE OF FOUR IVF EMBRYOS

**BAR STAR FRESH PRINCE 018 ET X
BLAIR-ATHOL 124E APPLAUSE 122G**

PE CE: 2.7 // BW: 3.1 // WW: 62.6 //

YW: 99.4 // MILK: 36.3

**GUARANTEE ONE PREGNANCY
IF IMPLANTED BY A CERTIFIED
TECHNICIAN.**

STORED AT PEAK VETERINARY SERVICES.
FULLY EXPORTABLE.

**CONSIGNED BY BLAIR-ATHOL POLLED
HEREFORDS AND ANITA DOKTOR
JEFF: 306-577-1375**

Fresh Prince X Applause 122G doesn't get more exciting then that for our program. 122G is arguably the most complete female ever born at Blair Athol. Her first calf sold to Bar Star Cattle Company in Montana and her 2022 natural calf was a Class winner at Agribition. Fresh Prince calves already on the ground across the US look exciting and we know this mating will click!!



LOT 98A

**ONE PACKAGE OF
FIVE UNITS**

CS BOOMER 29F

CE: 2.8 // BW: 3.9 // WW: 49.6 //

YW: 89.3 // MILK: 27.3

SEMEN IS STORED ON FARM

**CONSIGNED BY RIVER VALLEY POLLED
HEREFORDS**

CATTLE OFFICE: 613-378-2701



LOT 98B

**ONE PACKAGE OF
TEN UNITS**

BOYD MASTERPIECE 0220

CE: -8.4 // BW: 5.3 // WW: 57.5 //

YW: 94.4 // MILK: 24.6

SEMEN IS STORED ON FARM.

**CONSIGNED BY RIVER VALLEY POLLED
HEREFORDS**

CATTLE OFFICE: 613-378-2701

NJW 73S M326 TRUST 100W ET X MRF RACHAEL 4R Z97



LOT 99

ONE PACKAGE OF FIVE EMBRYOS

**GUARANTEE TWO PREGNANCIES
IF IMPLANTED BY A CERTIFIED
TECHNICIAN.**

EMBRYOS ARE STORED AT BAY OF QUINTE
VETERINARY SERVICES

**CONSIGNED BY RIVER VALLEY POLLED
HEREFORDS
CATTLE OFFICE: 613-378-2701**

PE CE: 4.8 // BW: 2.4 // WW: 57.5 // YW: 97.2 // MILK: 25.4

- Genetics that are mated for longevity with tonnes of potential
- Rachael has been a pillar at RV with multiple daughter in the herd
- Trust progeny continue to impress at all levels with exceptional EPDs



MATED FOR LONGEVITY



TRUST



DAUGHTER OF RACHAEL



DAUGHTER OF RACHAEL

MHPH 101S UMPIRE 118U X RVP RCY 100W YE HAW 130Y



PE CE: 1.5 // BW: 2.7 // WW: 54.2 // YW: 88.5 // MILK: 27.4

- A maternal mating here that is proven
- Umpire is noted for exceptional udder quality and just recently at the Phantom Creek Dispersal his progeny were extremely well received
- This Trust donor female exemplifies everything our cow herd strives for



WHAT RV STRIVES FOR



YE HAW DAUGHTER



UMPIRE



LOT 100

**ONE PACKAGE OF
FIVE EMBRYOS**

**GUARANTEE TWO PREGNANCIES
IF IMPLANTED BY A CERTIFIED
TECHNICIAN.**

**STORED AT BAY OF QUINTE VETERINARY
SERVICES**

**CONSIGNED BY RIVER VALLEY POLLED
HEREFORDS
CATTLE OFFICE: 613-378-2701**



ONE PACKAGE OF THREE EMBRYOS

**BOYD FT KNOX 17Y XZ5 4040 X
E MC 337U DIVA X50**

PE CE: 6.6 // BW: 1.5 // WW: 54.0 //

YW: 80.9 // MILK: 20.3

**GUARANTEE ONE PREGNANCY
IF IMPLANTED BY A CERTIFIED
TECHNICIAN.**

EMBRYOS ARE STORED AT BAY OF QUINTE
VETERINARY SERVICES

**CONSIGNED BY RIVER VALLEY POLLED
HEREFORDS
CATTLE OFFICE: 613-378-2701**



FORT KNOX

- Low birth mating here with phenotype that have worked very well at RV
- Impeccable body structure with maternal attributes
- Diva 50X progeny have been well received through our annual female sale



ONE PACKAGE OF THREE EMBRYOS

**NJW 73S M326 TRUST 100W ET X
LBB LULU 56Y**

PE CE: 0.3 // BW: 4.2 // WW: 58.9 //

YW: 102.9 // MILK: 27.9

**GUARANTEE ONE PREGNANCY
IF IMPLANTED BY A CERTIFIED
TECHNICIAN.**

STORED AT BAY OF QUINTE VETERINARY
SERVICES

**CONSIGNED BY RIVER VALLEY POLLED
HEREFORDS
CATTLE OFFICE: 613-378-2701**



- 56Y has been a mainstay here at RV with multiple progeny active within our herd book
- Trust never lets us down and mated to the powerfull machine will result in to the front pasture kind
- Full siblings to these embryos have topped our previous sales with a bull in a breeders herd in Alberta

NOTES

TERMS: The terms of the sale are cash or cheque, payable at par at sale time. The right of property shall not pass until after settlement has been made; unless previous arrangements have been made. Every animal sells to the highest bidder and in cases of disputes, the auctioneer's decision will be final. Announcements from the auction block will take precedence over the printed matter in the catalogue. Current exchange rates will be announced sale day. All monies are in Canadian funds.

CERTIFICATE OF REGISTRATIONS: Each purebred animal will carry papers issued by the appropriate breed association unless otherwise stated. A certificate of registry duly transferred will be furnished to the buyer for each animal after payment has been made.

HEALTH: All animals in the sale have met all necessary health requirements.

PEDIGREE ESTIMATES: Pedigree Estimates (PE) are created on the projected mating of the animal's sire and dam based on averages of the two, creating estimated values that do not hold the same accuracy of actual EPDs issued from the association and should be used as such.

LIABILITIES: It is understood that T Bar C Cattle Co. (2013) Ltd. is acting only as a medium between buyer and seller and is not responsible for any failure on the part of either party to live up to his obligations. Neither does T Bar C Cattle Co. (2013) Ltd. assume any financial obligations to collect or enforce collection of any monies between parties and any legal action that may in exceptional cases be taken must be between the buyer and the seller. T Bar C Cattle Co. (2013) Ltd. assumes no responsibility for any credit extended by the seller to the buyer. The buyer must look to the seller for fulfillment of all guarantees and representations made hereunder.

DELIVERY: We will assist in arranging transportation wherever possible. Each purchase becomes the risk of the purchaser as soon as sold.

PHONE, MAIL, WIRE BIDS: Bidders unable to participate in the sale may phone, wire or mail their bids and instructions to the sale manager, auctioneer or special representatives. Bids must be received in sufficient time prior to the sale.

INSURANCE: We strongly recommend that insurance is purchased for full value.

ERRORS: All announcements at sale time, written or oral, supersede any written material in the catalogue.



IVF PAYS

The Boviteq Difference is at work from coast to coast with huge payoffs growing year after year!

WITH BOVITEQ

Work with donors every

2 weeks

Longer timeframe than
conventional flushing

As young as 7 months

100%

Leader In
Embryo Freezing
100% Direct Transfer



Industry's highest
success rate



Able to work donors up to
100 days into pregnancy

More Embryos Per Donor = **More** Calves On The Ground

Boviteq[®]
INNOVATIVE IVF SOLUTIONS

Visit www.boviteq.com to find a satellite near you!



BOVITEQ IS A DIVISION OF SEMEX